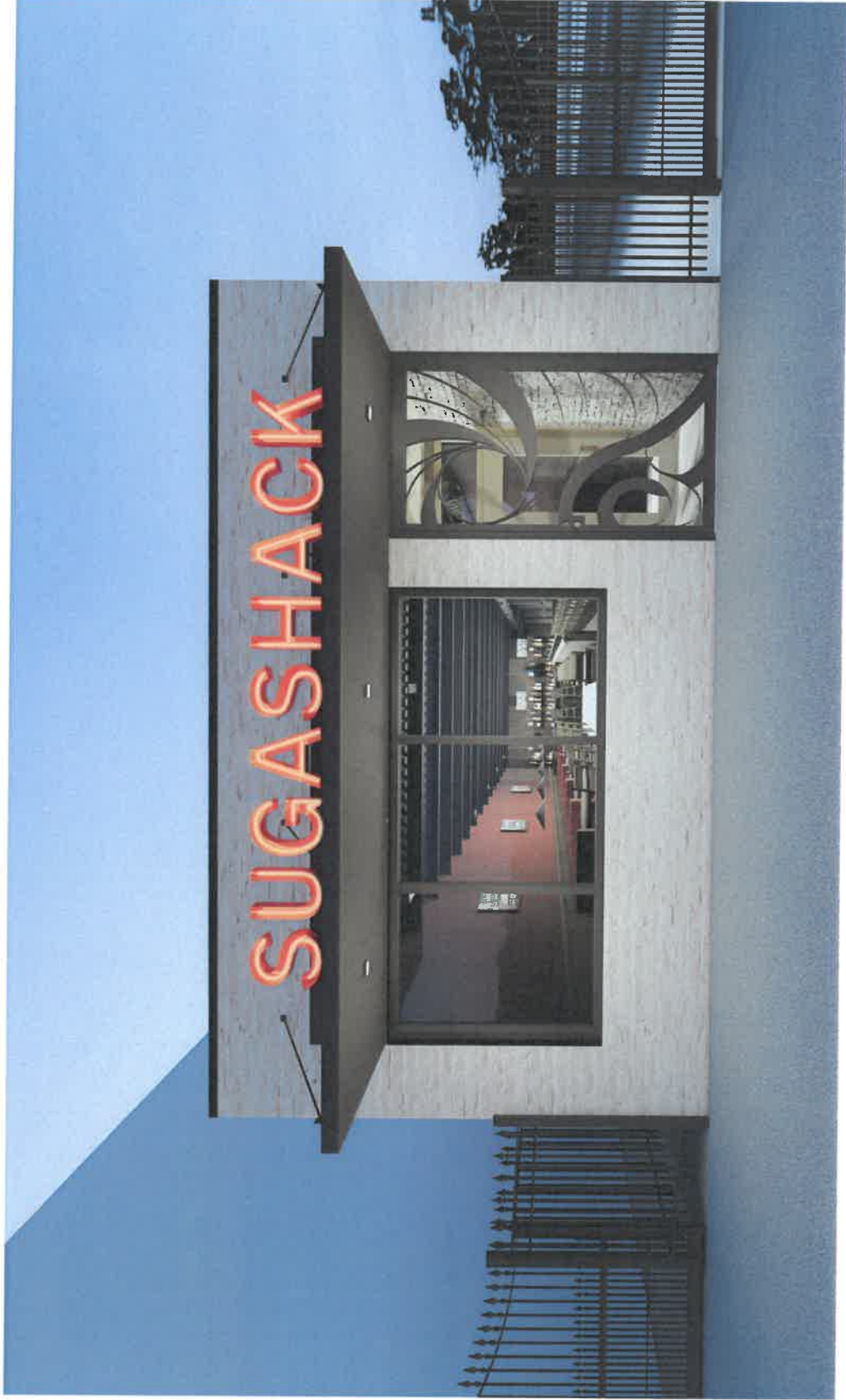


SOUTH ELEVATION SIGNAGE

SUGAR SHACK
392 Beale Street
12/13/19

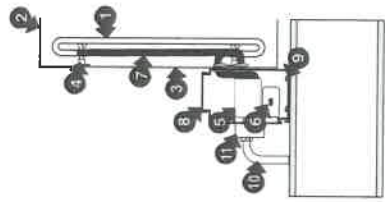


brg.3sarchitects



FABRICATE & INSTALL (1) SET OF 24" OPEN FACE CHANNEL LETTERS. ALUMINUM RETURNS & FACES PAINTED RED. INTERNALLY ILLUMINATED BY OUTLINE NEO RUBY RED 15 MM NEON. POWERED BY 30 ma. TRANSFORMERS CONTAINED METAL BOXES INSIDE CUSTOMER'S ALUMINUM CANOPY.

1. NEON TUBING
2. .063 ALUMINUM RETURNS
3. .090 ALUMINUM BACKS
4. GLASS TUBE SUPPORTS
5. UL APPROVED TRANSFORMER (30 MA.)
6. DISCONNECT SWITCH ON RACEWAY END
7. G.T.O WIRE
8. ALUMINUM RACEWAY PAINTED TO MATCH BUILDING
9. NON-CORROSIVE ATTACHMENT HARDWARE
10. PRIMARY ELECTRICAL SUPPLY INSIDE CONDUIT
11. STANDARD ELECTRICAL JUNCTION BOX



SIGN MUST BE GROUNDED IN COMPLIANCE WITH ARTICLE 600 OF NATIONAL ELECTRIC CODE.

CIRCUITS REQUIRED ONE (1) 20 AMP, 120 VOLT CIRCUIT DEDICATED TO SIGN ONLY



APPROVED BY: 110 VOLT 15 AMP. CIRCUIT TO BE PROVIDED AND PAID FOR BY CUSTOMER. DATE:

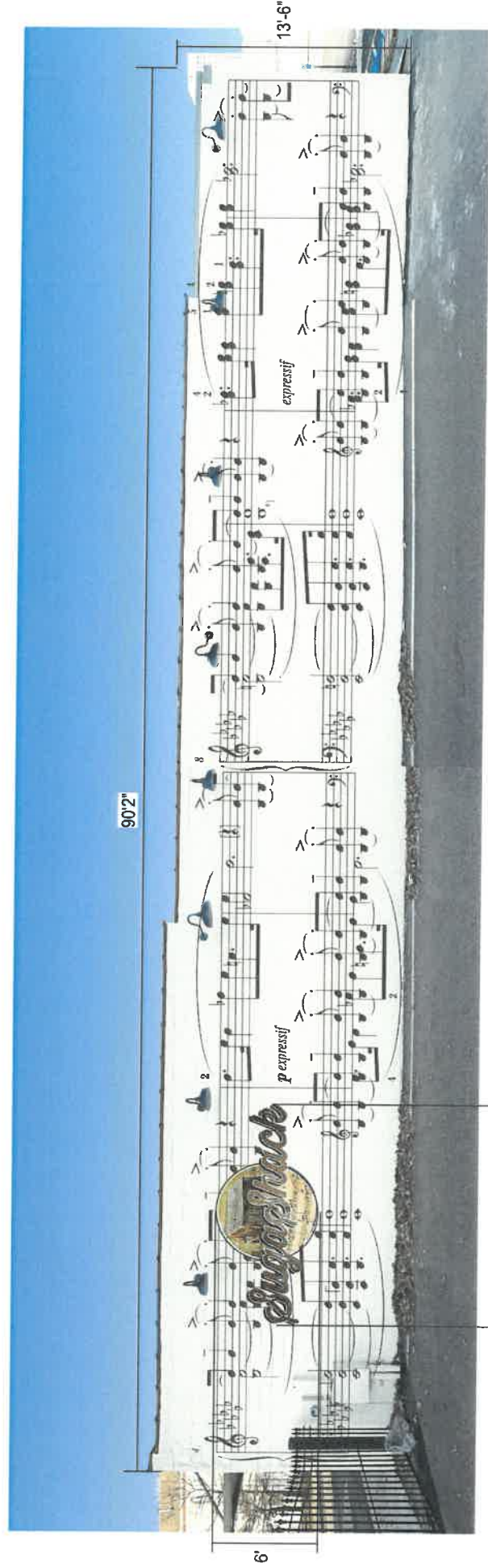
CUSTOMER: SUGASHACK	DRAWING NO. 12032019-SS
SALESMAN RANDY HILL	DRAWN BY: D. E. Lunnin-Hans
SCALE 1/2" = 1'	DATE 12-03-2019
821 Vance Ave, Memphis, TN 38126	PH : 901-523-1595
	FAX: 901-527-7372

EAST ELEVATION MURAL

SUGAR SHACK

392 Beale Street

12/13/19



SHEET MUSIC- MAURICE RAVELS THIRD MOVEMENT "SCARBO"