

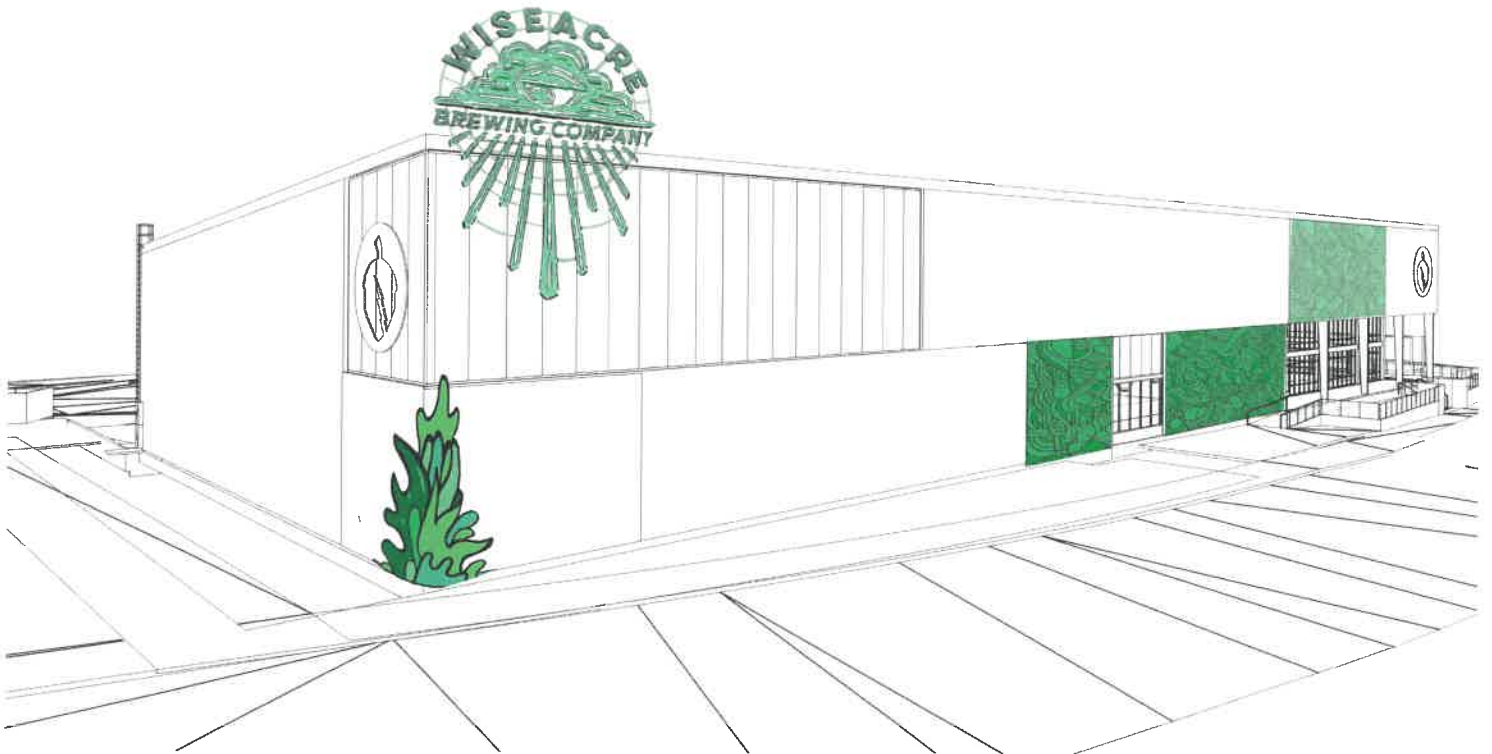


ADDITIONAL EXTERIOR LIGHTING AND SIGNAGE SPECIFICS

FOR

WISEACRE BREWING COMPANY

398 S. B.B. KING BLVD, MEMPHIS



YOUNGBLOOD STUDIO

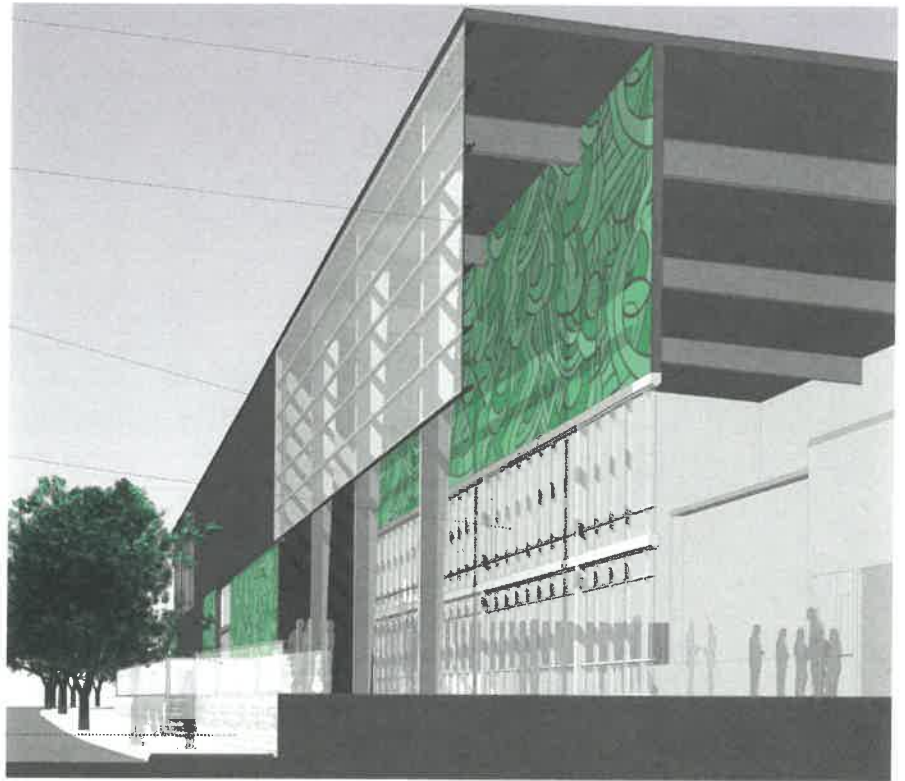


RACHEL
BRIGGS
ILLUSTRATION • DESIGN

WISEACRE BREWING COMPANY

MEMPHIS, TENNESSEE

JANUARY 2020



EXTERIOR LIGHTING OF BUILDING

LOCATION: CORNER MAIN ENTRY

Located at the main entry - on the southwest corner of the building facing both the southward beer garden and front entrance along B.B. King Boulevard - external lights will be installed illuminating this prominent area of the building, serving both functional and decorative purposes. Linear surface mount luminaries at the front entry will create a glow between the exterior perforated panels that extend over the porch area, while illuminating the art panels affixed to the building located directly above the doors and windows. At night, the art will lit, glowing through the perforations of these panels with the light in effect. Attached are specifics of the light fixtures, *VSL501 Dynamic White TUWH Exterior Linear Surface* lights which will be installed in this section (following page).



WINLINE

WSL501 Dynamic White TUWH Exterior Linear Surface

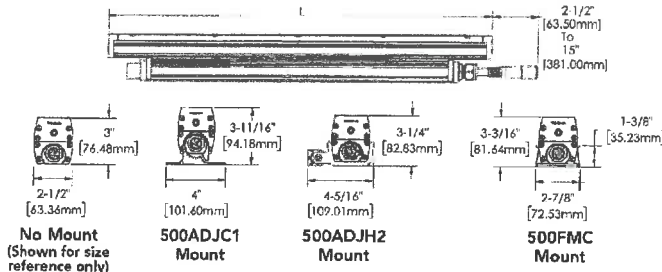
Catalog Number _____

Notes _____

Type _____

Specifications

Model	Length	Weight
WSL501 INT	25'-7/8" (69mm)	2.5 lbs (1.1kg)
	3' (941mm)	7.1 lbs (3.2kg)
	45'-7/8" (1243mm)	13 lbs (5.9kg)



Introduction

WINLINE 501 Series linear surface mount luminaires are designed to graze or wash interior architectural features or facades with tunable white options. WSL501 is available in 2ft, 3ft, or 4ft lengths with various distribution options that provide the user exceptional beam control, placing the light where it is required. WINLINE 501 Series linear surface mount luminaires produce best in class efficacy and optical performance. Remote device management (RDM) capability allows bi-directional communication simplifying installation.

Warranty

5-year limited warranty. Complete warranty terms located at: www.acuitybrands.com/CustomerResources/Terms_and_conditions.aspx

Ordering Information

EXAMPLE: WSL501 LSL 12FT MSL4 500ADJH2 WL TUWH LAYR 30X60DEG 1000LMF 80CRI MVOLT DARK DMX BFL FCLW50LR CBT18 WHT

Series	Linear Plan	Total Run Length	Maximum Section Length	Mounting	Environment	Dynamic Feature	Dynamic Range
WSL501	LCB Linear Center Balance LLP Linear Longest Possible LSL Linear Same Length	4 FT Specify continuous linear feet in 1' increments starting at 2' (Example: 24F')	MSL2 2' Section Length MSL3 3' Section Length MSL4 4' Section Length	500ADJC1 Adjustable Mount Center Axis 500ADJH2 Adjustable Mount Side Hinge 500FMC Fixed Mount	WL Wet Location	TUWH Tunable White	RHYR Rhythm Range (6500K - 2700K) LAYR Layer Range (5000K - 2200K) (Not available in 2019)

Distribution	LED Output	LED Color Rendering	Voltage	Minimum Dimming Level	Control Input	External Shielding
9X90DEG 9 x 9 Degrees 10X60DEG 10 x 60 Degrees 15X30DEG 15 x 30 Degrees 30X60DEG 30 x 60 Degrees 40X60DEG 40 x 60 Degrees 60X60DEG 60 x 60 Degrees WWD Wall Wash (Asymmetric)	300LMF 300 Nominal Lumens Per Foot 450LMF 450 Nominal Lumens Per Foot 600LMF 600 Nominal Lumens Per Foot 750LMF 750 Nominal Lumens Per Foot 1000LMF 1000 Nominal Lumens Per Foot	80CRI 80+ CRI 90CRI 90+ CRI (Not available in LAYR)	MVOLT 120V / 277V	DARK Constant Current, Dimming to <1%	DMX DALI	(blank) No Shielding BFL Baffle Linear Surface (Matte black finish) GVL Glare Visor Linear Surface (Finish to match housing)

** WWD option supplied with a snap-on visor

Electrical Option	Brackets	Lens Option	Finish	Accessories
NDFCL No Feed Cable (order separate) FCLW10LR 10FT Feed Cable, Right Feed, Exterior Location FCLW25LR 25FT Feed Cable, Right Feed, Exterior Location FCLW50LR 50FT Feed Cable, Right Feed, Exterior Location FCLW100LR 100FT Feed Cable, Right Feed, Exterior Location	(blank) No Cantilever Brackets CBT6 Cantilever Bracket 6" Projection CBT12 Cantilever Bracket 12" Projection CBT18 Cantilever Bracket 18" Projection CBT6 Cantilever Bracket Large 6" Projection CBT12 Cantilever Bracket Large 12" Projection CBT18 Cantilever Bracket Large 18" Projection **Must have 500ADJH2 mounting selected.	(blank) Standard Clear Acrylic Supplier FCA Frosted, Clear Acrylic	BKT Slack Textured Paint SIT Silver Textured Paint WHT White Textured Paint CPF Custom Painted Finish RALTB0 RAL Paint (Finish) RALTB0 for pricing only, replace with applicable RAL call out when ready to order. See the Acuity Brands Lighting brochure for available options.	Controller (Fresco Control System) See page 5-7 DMX-Power Integrator (required for installation) See page 5-7 Feed Cable (required for installation) See page 5-7 Jumper Cable See page 5-7 Liquid-Tight Cord Grip See page 5-7 Glare Visor See page 5-7 Baffle See page 5-7 Brackets See page 5-7

EXTERIOR LIGHTING OF BUILDING

LOCATIONS:

**FRONT OF BUILDING
PARKING LOT
WALKWAYS
BEER GARDEN**

The following pages will highlight the site map and materials of exterior lighting that will surround the Wiseacre building in various locations of the campus, including the front of the building along B.B. King Blvd, the beer garden, the walkways alongside the south face of the building and the parking lot. Site map and details provided by LRK.

FOLLOWING PAGES:

LIGHT PLACEMENT and SITE MAP

FIXTURE SPECIFICATIONS

- SIGN 9 wall mount lights
- ECLIPSE micro floor/wall recessed LED luminaire
- JUNO FlexConnect Integrated Micro Optics
IO414 Series Lights
- JUPITER Professional Inground LED Fixture



YOUNGBLOOD STUDIO



**RACHEL
BRIGGS**
ILLUSTRATION DESIGN

WISEACRE BREWING COMPANY

MEMPHIS, TENNESSEE

JANUARY 2020

SITE MAP

LRK
Looney Ricks Kiss
 Architecture Planning Interior Research
 500 South B.B. King Blvd., Suite 600
 Memphis, TN 38102
 Telephone (901) 521-1440
 Fax (901) 525-7340
 Email: info@lrk.com

Client:

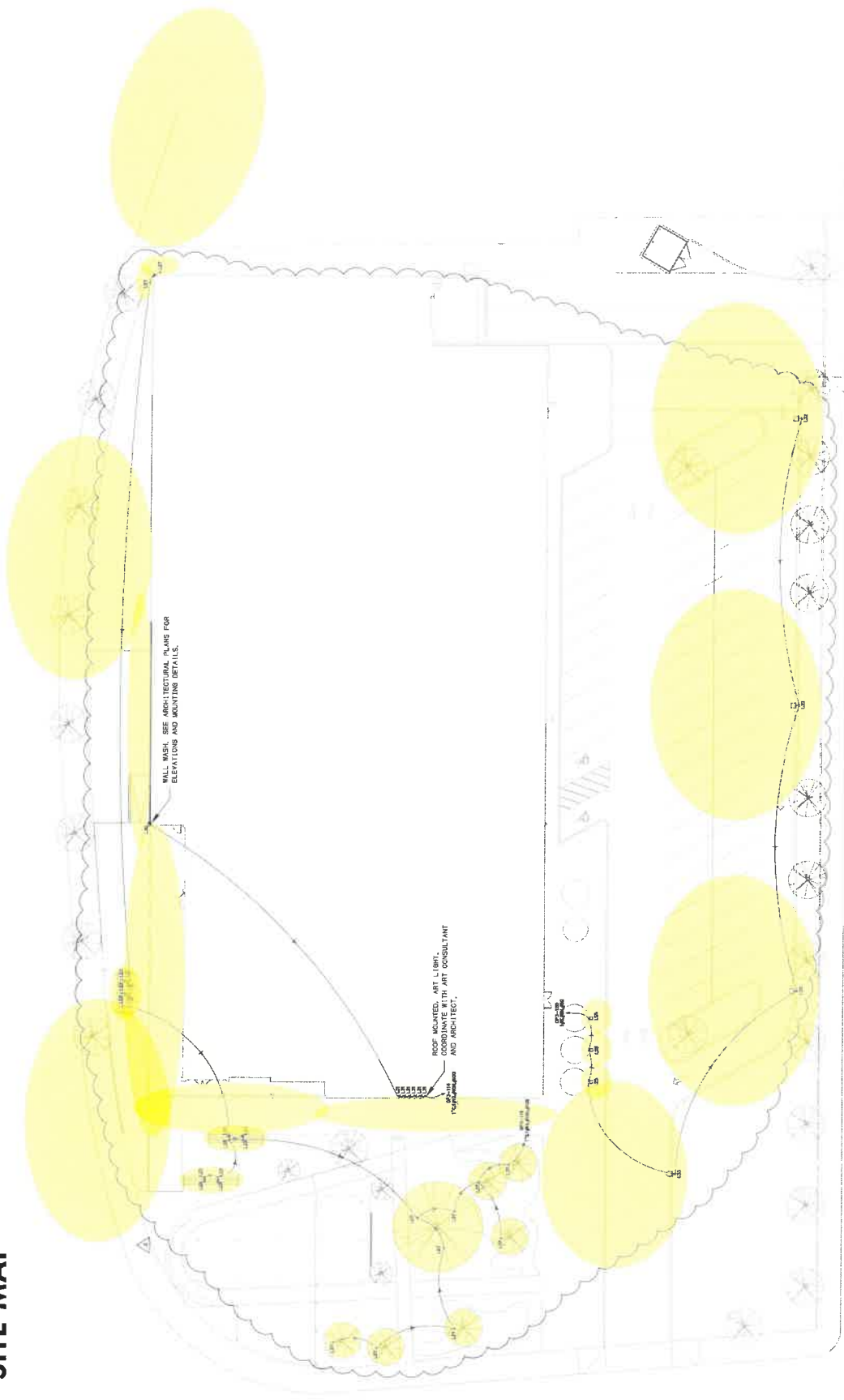
 2733 Broad Ave
 Memphis, TN 38112

Issue and Revisions	Date	Issued / Revised
1	03/23/19	Permit Set
2	04/10/19	Permit Set
3	06/20/19	AS1 #5
4	06/20/19	AS1 #5

HNA ENGINEERING
 11800 Cranshaw Dr. Ste. 104
 Memphis, TN 38127
 Phone: (901) 290-8322
 www.HNAengineering.com



LRK Project Number: 011.18071.00
 Project Name:
Wisecore Brewing
Facility
 South B.B. King Blvd Memphis, TN
 Drawing Name:
SITE LIGHTING - ELECTRICAL
 Drawn By: JCH
 Checked By: JCH
E102




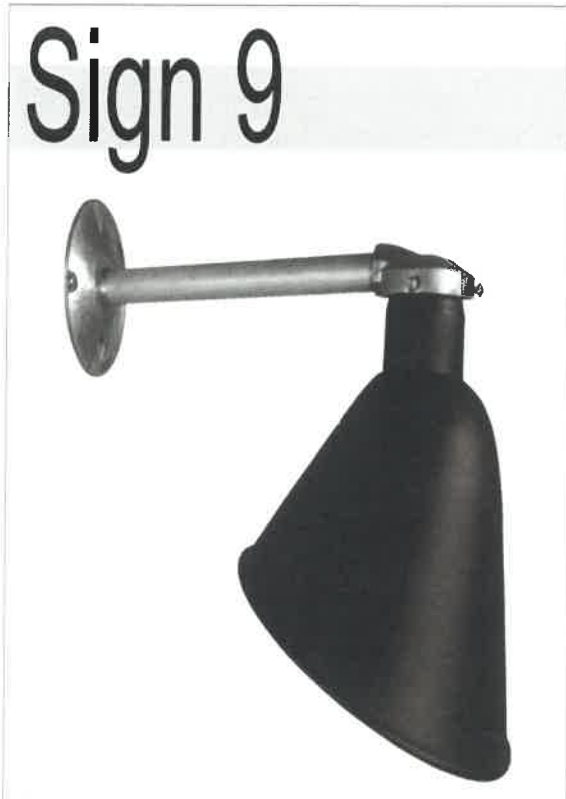
1 SITE LIGHTING - ELECTRICAL
 1/16" = 1'-0"

KEYED NOTES

SITE LIGHTING NOTES

1. SITE CIRCUITS SHALL BE INSTALLED AT A DEPTH OF 18" MINIMUM USING SCHEDULE 40 PVC.
2. ALL CONDUITS AND BRANCH SHALL HAVE A MINIMUM OF #10 WIRING AND 1" CONDUIT. (CUT)
3. SITE LIGHTING FIXTURES SHALL BE CONTROLLED BY PHOTOCELL CLOCK - PULL UP PHOTOCELL WITH MANUAL OVERRIDE.
4. IN AREAS WHERE POLES MAY COME IN CONTACT WITH VEHICLES, BRACES SHALL BE EXTENDED ABOVE GRADE TO PROTECT VEHICLES FROM COLLISION WITH POLE BASE DETAIL.
5. FOR POLE MOUNTING HEIGHTS, REFER TO FIXTURE SCHEDULE.
6. FOR WALL MOUNTING HEIGHTS, REFER TO FIXTURE SCHEDULE.
7. CONDUIT SHALL FOLLOW THE APPROXIMATE ROUTE SHOWN ON THESE DRAWINGS. SLIGHT MODIFICATIONS ARE ACCEPTABLE.

 <p>CLEAR ADVANTAGE LIGHTING</p>	<p>Project 19-29023-10 Wiseacre</p> <p>Submitted By CLEAR ADVANTAGE LIGHTING INC</p>	<p>Catalog Number 9 19LED 30K 277 WM ** DIML</p> <p>Notes Advise finish</p>	<p>Type L25</p>
--	--	---	----------------------------



TMSLIGHTING

ESTABLISHED 1923

Construction

High grade aluminum reflector and mounting arm, with stainless steel hardware.

Lamp

Operates with Cree™ LED (19W max.), compact fluorescent (42W max., PL-T), metal halide (100W max. E-17), and incandescent (100W max., A-19) light sources.

A dimmable 17W LED lamp is also available (120V, PAR 38, E26 base, CCT 4000K).

Note: LED systems use 120-277V supply voltage, and are not compatible with 347V. Incandescent and metal halide systems, and those using the 17W LED PAR 38 lamp, use a medium base socket (E26). LED modules do not require a socket, and are wired directly to the integral driver.

Option

Wire Guard: a steel, chrome-plated wire guard is available for lamp protection against light projectiles, wildlife, and serves as a vandal deterrent.

Ballast / Driver

Integral and remote, ballasts and drivers are available for indoor and outdoor locations.

Ballasts are integral and electronic; efficient with a high power factor greater than 90%, and quiet with an "A" sound rating.

The LED source is controlled by an advanced electronic driver that delivers consistent power.

Surge Suppressor

All 120V, 277V, and universal voltage LED luminaires are equipped with an integral, 6kV surge suppressor.

Dimming

The LED dimming option is the 0-10V current-sinking type.

Note: The dimming option is available to systems with 120-277V supply voltage only.

Use a current-sinking dimming system (by others) for LED dimming.

Compatibility of this product is not guaranteed with all control systems.

Emergency

Features

- Asymmetrical reflector provides uniform coverage
- Approved for indoor and outdoor applications
- Surge suppressor protects the internal components
- Practical options for application and design flexibility
- Quality components for extended lamp and component life

Applications

Sign 9 is ideal for illuminating signage at close range or medium range. It also provides adequate night time security lighting.



YOUNGBLOOD STUDIO




**RACHEL
BRIGGS**
ILLUSTRATION · DESIGN

WISEACRE BREWING COMPANY

MEMPHIS, TENNESSEE

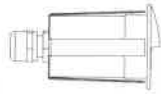
JANUARY 2020

 <p>Project 19-29023-10 Wiseacre</p> <p>Submitted By CLEAR ADVANTAGE LIGHTING INC</p>	<p>Catalog Number ECLIPSE90 830 F *** BME FG 67/DR-LEDR-070-033-UNV-S</p> <p>Notes Confirm finish</p>	<p>Type L23</p>
---	---	----------------------------

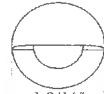


SPECIFICATION - ECLIPSE

MICRO FLOOR OR WALL RECESSED LED LUMINAIRE WITH EYELID OPTION FOR MINIMAL GLARE



2-7/8" depth



1-9/16"
Cutout 1-1/4"

LUMINAIRE

Material: Aluminum, CNC machined to aerospace tolerances.
 Finish: Extremely durable anodized aluminum silver, anodized aluminum black. For especially demanding environments use hard anodized silver* hard anodized black*
 Beam angles: Uncollimated, Narrow = 12°
 Medium = 30° Flood = 50°
 Glare control: Smooth eyelid design and flanged bezel minimizes glare.
 Temperature range: From -4°F to 122°F
 Cutout: 1-1/4"Ø
 *Upon request. Minimum order quantities apply

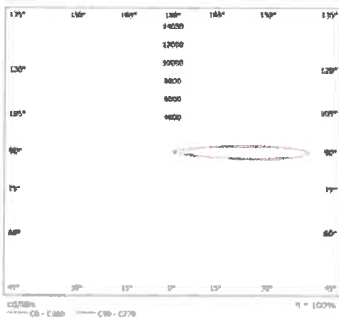
This acdc product is Dual binned within a 2 step MacAdam ellipse to guarantee color consistency.
 Supplied with a 5 year guarantee.

PERFORMANCE

LED Type		Cree		
LED Quantity		1		
Drive Current		700mA		
Power Consumption Including 85% Efficient Driver		2.5W		
PFC		Driver dependent (Typical 0.9)		
Color Temp	2700K	3000K	4200K	6000K
Initial Color Accuracy		2 Step MacAdam Ellipse		
Color Stability Over Life Measured at 6000hrs		2 Step MacAdam Ellipse		
CRI	85	85	80	80
Initial Lamp Lumen Output	130	146	157	174
Initial Lamp Lumens per Circuit Watt	52	58	63	70
Lamp Lumen Output including Thermal & Optical Losses	110	124	133	148
Lamp Lumens (including Thermal & Optical Losses) per Circuit Watt	44	50	53	59
Luminaire Lumen Output	81	92	98	110
Luminaire Lumens per Circuit Watt (lm/W)	32.40	35.80	39.20	44.00
Lifetime L70. Based on TM-21 Lumen Depreciation LIF Cal/Codes for % depreciation at 10,000hrs		>50,000 hours		
		Cat1/Code9		

Based on 3000K and Narrow Optic

POLAR DIAGRAM



CONE DIAGRAM

Mounting Height (m)	Beam Cone Width (m)	Orthogonal Beam Cone Width (m)	Projected Illuminance (lux)
0.5	0.10	0.10	7830.8
1	0.19	0.19	1957.7
2	0.38	0.38	489.4
3	0.57	0.57	217.5
4	0.76	0.76	122.4
5	0.96	0.96	78.3
6	1.15	1.15	54.4
8	1.53	1.53	30.6
10	1.91	1.91	19.6
20	3.82	3.82	4.9



Tel: +1(410) 220 00 88

Email: sales@acdcighting.us

Web: www.acdcighting.us

1 Rev2, 18/01/19

Specification subject to change without notice. Refer to our website for the most recent product documentation.



YOUNGBLOOD STUDIO



RACHEL BRIGGS
ILLUSTRATION DESIGN

WISEACRE BREWING COMPANY
MEMPHIS, TENNESSEE
JANUARY 2020

<p>Top Products. Unmatched Service. Clear Advantage.</p>	Project 19-29023-10 Wiseacre	Catalog Number IO414 15D 5FT 30K 80CRI/DLDP5 60W FPCZT IP67	Type L30
	Submitted By CLEAR ADVANTAGE LIGHTING INC	Notes	

Juno

Type	Cat. No.
Project:	
Notes:	

PRODUCT DESCRIPTION

Juno FlexConnect featuring Patent Pending micOptix technology is a diminutive flexible architectural luminaire system featuring miniature silicone optics for grazing, washing, cove, and other architectural or accent applications. Delivering up to **425 lumens per foot**, Juno FlexConnect utilizes onboard current regulation for consistent light output from the start to end of the run. Juno FlexConnect luminaires feature silicone encapsulation for durability, reliability, and ease of installation. Luminaire can be cut and reconnected in six inch increments, making FlexConnect easy to configure in the field.

PRODUCT SPECIFICATIONS

Performance Delivers up to 425 lumens per foot while consuming just 4.8 watts per foot.

Construction Flexible, silicone encapsulated LED light engine is equipped with miniature silicone optics in three distributions: 15 deg, 20deg x 45 deg, and Asymmetric • Fourteen (14) LEDs per foot • Onboard current regulation maintains consistent light output from start to end of run • Rated for indoor or outdoor use when used with appropriate accessories.

Field-Cuttable Features integrated connectors every six (6) inches, allowing luminaire to be field cut and reconnected in six (6) inch increments. **NOTE: MUST USE IOCUTTER TO CUT LUMINAIRE - see instructions.**

Color Quality Features industry leading color consistency within 3 SDCM • Available in 2700K, 3000K, 3500K, and 4000K at 80 CRI min • 2700K and 3000K are also available in at 90 CRI min • Silicone is UV resistant for excellent color consistency over life.

Drivers Compatible with Juno Class 2, 24VDC remote mount drivers • For a list of compatible dimmers, refer to [JUNOLINEARLED-DIM](#)

Run Length Supplied in 5' spools • Beginning of spool features 12" of 22AWG wire which can be removed if longer starter cable is required or to connect multiple strips together • Minimum run length of 1' • **Maximum run length of 20'.**

Operating Environment -30°C to 50°C, 95% humidity (non-condensing)

Life Rated for L70 50,000 hours.

Labels ETL/cETL listed for wet locations • IP67 Rated • CE certified • ENERGY STAR® certified • Can be used to comply with Title 24, part 6.

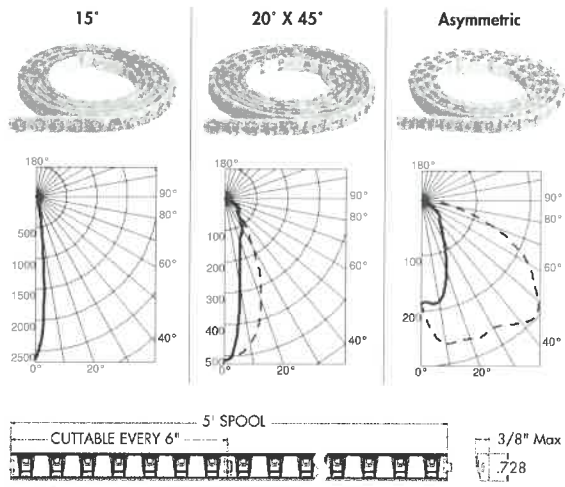
Warranty 5-year limited warranty. Complete warranty terms located at: http://www.acuitybrands.com/CustomerResources/Terms_and_Conditions.aspx

Specifications subject to change without notice.

IO414

FlexConnect™
 Architectural Linear Lighting System
Integrated Micro Optics
IO414 Series
Indoor/Outdoor
Wet Location (IP67)

micOptix™



ORDERING INFORMATION

Luminaire					Ordering Example: IO414 15D 5FT 27K 90CRI
Series	Optic	Length	Color Temperature	CRI	
IO414 FlexConnect with micOptix, 4.8 W/ft	15D 15° 20x45D 20°x45° ASY Asymmetric	5FT	27K 2700K 30K 3000K 35K 3500K 40K 4000K	80CRI 90CRI ¹	

Driver/Power Supply				Ordering Example: DLDP5 96W FPCZT IP67
Driver	Max Wattage	Dimming	Options	
DLDP5 Flex 24VDC Remote Driver DLDCP Flex 24VDC Plug-in Driver	25W ² 25 watt 40W 40 watt 60W 60 watt 96W 96 watt	- No Dimming FPCZT ⁴ 0-10V & Phase Dimming (5% min) ECOS2 ² Lutron 2-wire Forward Phase (1% min) ECOS3 ³ Lutron 3-wire EcoSystem (1% min for 40W), (0.1% min for 96W)	IP67 ⁷ IP67 Rated	

- Notes:
- 1 90CRI available with 27K and 30K only.
 - 2 DLDCP available with 25W only.
 - 3 25W non-dimming only.
 - 4 FPCZT available in 60W & 96W only.
 - 5 ECOS2 available in 40W only.
 - 6 ECOS3 available for 40W & 96W.
 - 7 IP67 available with FPCZT only.

Accessories on following pages.



YOUNGBLOOD STUDIO



RACHEL BRIGGS
 ILLUSTRATION · DESIGN

WISEACRE BREWING COMPANY
 MEMPHIS, TENNESSEE
 JANUARY 2020

TARGETTI

JUPITER

Professional Inground LED Fixture

Concept: Recessed Ingrade LED fixture.

Materials: Anodized polished aluminum body with Passive cooling system.

Trim: Stainless steel (AISI316L) polished stainless steel front ring with bevelled extraclear front glass.

Optic: Precision optic system with PMMA lenses for the spot, flood and wide flood versions with a light cut system integrated into the front glass.

Mounting: Semi flush mount: bevelled trim, installation sleeve (required).

Power Supply: Remote Class II 120V-277VAC power supply required, see page 2 for options.

Installation: Fixture semi flush mount installation includes 3.15" tall x 2.95" diameter sleeve. Pre-cabled with 2ft direct burial 18ga 2 Conductor Cable for Connection to remote power supply.

Wattage: 9W

Color Temperature: 2700°K / 3000°K / 3500°K / 4000°K

CRI: 84Ra, Ra90 version available on request

Lumens:

	3000°K	4000°K
Spot 18° =	964Lm	994Lm
Flood 34° =	982Lm	1013Lm
Medium Wide Flood 57° =	962Lm	992Lm

Lumen Maintenance (L70): 50,000hrs

Calculation for LED fixtures are based on measurements that comply with IES LM-80.

Voltage: 24V DC

IP Rating: IP67

IK Rating: IK10

Load Rating: Resistant to static loads up to 20KN in flush mounted cement and pavement installations.

Certifications: cULus Class 2 Wet Location Listed E479873

Tested in accordance with LM-79-08

^A Title 24 commercial installation compliant.

Warranty: 5 year limited warranty

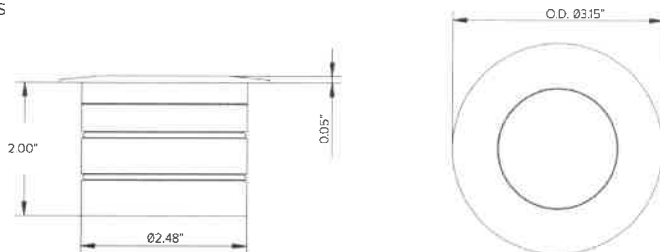
* Up to 1 METER DEPTH of water for up to a maximum of 30 MINUTES



PRODUCT CODE	DRIVER	LENS	WATTAGE	COLOR TEMP	VOLTAGE	LOUVER OPTION	+	INSTALLATION
JUP - JUPITER	RP - Remote Driver	SP - Spot 18°	11 - 9W	27 - 2700K	24 - 24VDC	LV - Integral Black Louver	+	Required (See Pg 2)
		FL - Flood 34°	30 - 3000K					
		WF - Wide Flood 57°	35 - 3500K					
			40 - 4000K					

QUICK SHIP JUPRPFL13024-QS + 1E3175-QS + DELV96124D-QS
1-2 weeks
* Lead time for quick ship fixtures is 1-2 weeks from processed PO date. Consult factory for quantities of over 20 fixtures to confirm lead time.

Views

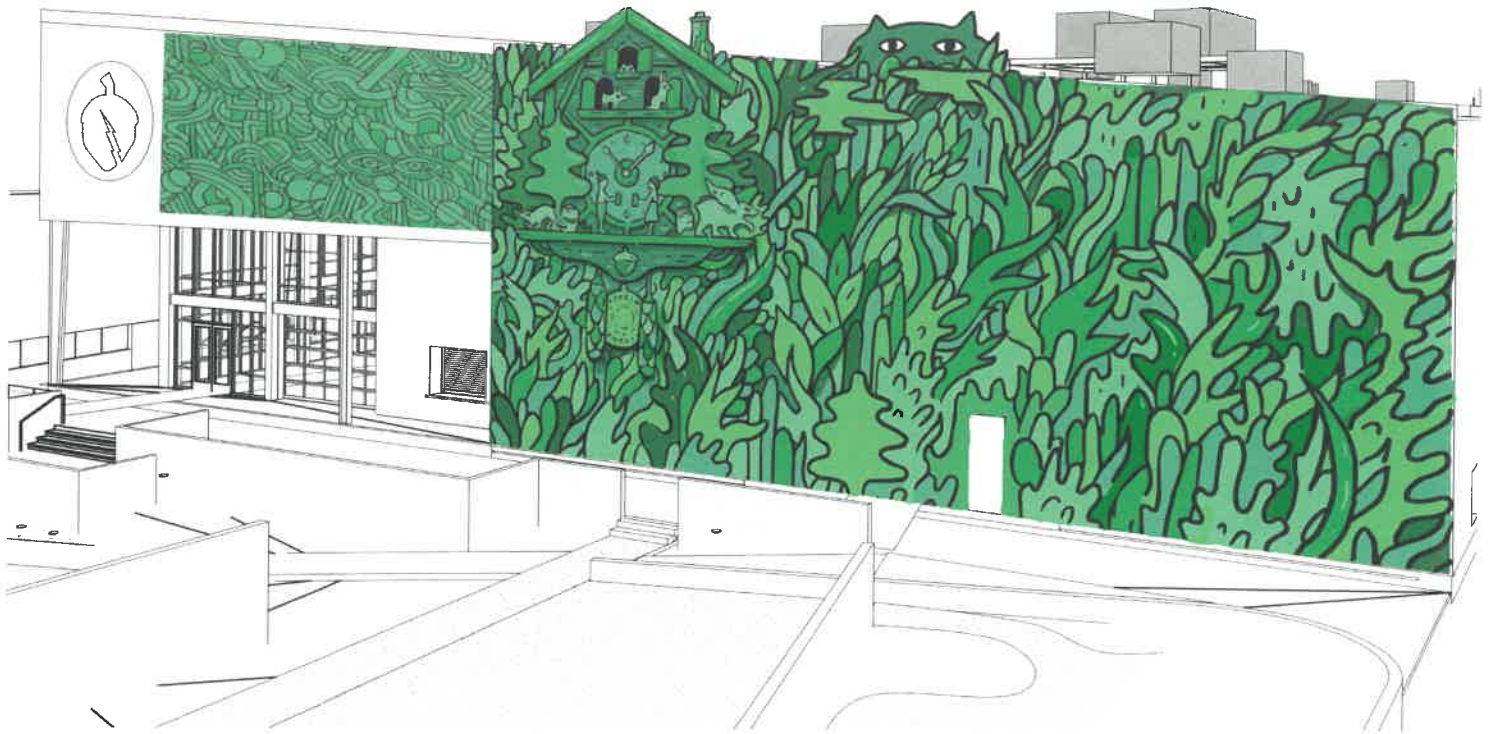


YOUNGBLOOD STUDIO



RACHEL BRIGGS
ILLUSTRATION-DESIGN


WISEACRE BREWING COMPANY
MEMPHIS, TENNESSEE
JANUARY 2020



ADDITIONAL EXTERIOR LIGHTING

LOCATION: SOUTH EXTERIOR ART WALL

The exterior artwork on the southern wall of the building will be illuminated with ambient washes of light, using architectural light fixtures affixed from different points and angles, creating a gentle, dramatic presentation. The Model 1043 lights (following page) will aid in highlighting the art wall, and the Razar pole lights (see second page, following) will serve as additional lighting along the art wall and garden. With these fixtures, an ambient glow will be created that will work both in functionality and in an aesthetic interaction with the art.

 <p>CLEAR ADVANTAGE LIGHTING</p>	<p>Project 19-29023-10 Wiseacre</p> <p>Submitted By CLEAR ADVANTAGE LIGHTING INC</p>	<p>Catalog Number 1043Y XX MF 30 F MV 010</p> <p>Notes</p>	<p>Type L31</p>
--	--	--	----------------------------



**PROFESSIONAL
OUTDOOR LIGHTING**

Type:

Model:

Project:

SPECIFICATION SHEET

MODEL 1043 Architectural Series • Up & Accent

FIXTURE SPECIFICATIONS:

DOOR:

Die-cast, low copper content, A360 aluminum offers maximum corrosion protection. Stainless steel fasteners affixed to a minimalistic styled flat door (standard). Door is designed to shed water from the lens surface. Also available as an accessory is a die-cast medium shield **CS**.

HOUSING:

Die-cast A360 aluminum. Optic and driver compartment separately sealed while being electrically connected. Housing aiming achieved via a Vista patented Infinity Knuckle (see MOUNTING).

FINISH:

Durable powder coat finish available in Black, Architectural Bronze, Dark Bronze, Granite, White, Architectural Brick, Light Bronze, Special Bronze, Glossy Gray, Rust, Hunter Green, Weathered Bronze, Weathered Iron, Graphite Metallic, Verde, Pewter, Mocha and Olde Finish. Custom Powder coat finishes available on request.

LED:

Cree® MT-G2 High Density Array (HDA) driven at 500mA, 700mA, 750mA, 1000mA, 1400mA, or 1750mA.

COLOR TEMPERATURE:

LED's are offered in 2700°K, 3000°K, 3500°K, 4000°K, or 5000°K CCT ANSI white 4 step Cree® Easy White™ bins

LIGHT DISTRIBUTION:

Very Narrow Spot **VNS** (16° FWHM), Narrow Spot **NS** (19° FWHM), Medium Flood **MF** (30° FWHM), and Wide Flood **WF** (46° FWHM).

REFLECTOR:

High-purity, vacuum metalized, specular or semi-specular optics designed for maximum performance and uniformity. Very Narrow Spot **VNS** optic incorporates an internal source shield to eliminate unwanted glare outside the beam pattern.

LENS/SEAL:

2.7 mm thick tempered and seamed clear glass sealed with a closed cell molded silicone gasket.

WIRING:

Prewired with 150° C-rated wire.

DRIVER:

Multi-Volt **MV** 120V-277V driver input standard. Integral CUL listed LED driver, either non-dimmable **ND** or dimmable. Dimming: 0-10VDC **O10** and Phase Cut **TRIAC** (120V only) **PCT** options available.

ACCESSORIES:

Barn Doors **BD**, Full Shield **FS**, and Half Shield **HS** available. Accessories are attached into pre-existing slots located on the underside of the fixture door providing for a fastener free appearance.

MOUNTING:

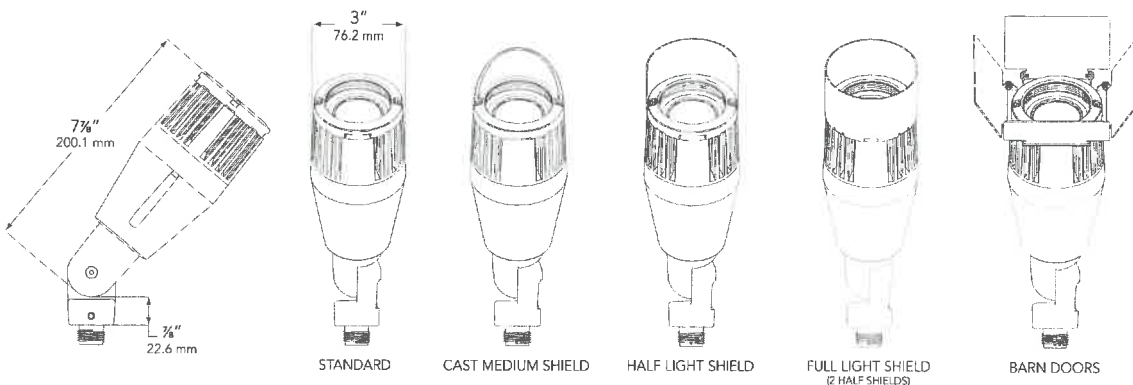
Infinity Knuckle - Die-cast, copper-free aluminum, stainless steel stem with 1/2" NPT thread. A fully sealed spherical grommet allows infinite adjustment capabilities.

CERTIFICATION:

UL & CUL wet location certified. *IP66*

All Vista Architectural luminaires are **MADE IN THE U.S.A.**

DIMENSIONS:



Vista Professional Outdoor Lighting reserves the right to modify the design and/or construction of the fixture shown without further notification.

1625 Surveyor Avenue • Simi Valley, CA 93063 • (805) 527-0987 • (800) 766-VISTA (8478)
FAX: (888) 670-VISTA (8478) • email@vistapro.com • www.vistapro.com



YOUNGBLOOD STUDIO



**RACHEL
BRIGGS**
ILLUSTRATION • DESIGN

WISEACRE BREWING COMPANY

MEMPHIS, TENNESSEE

JANUARY 2020

SOLID STATE AREA LIGHTING

RAZAR SERIES-LED

S P E C I F I C A T I O N S

OPTICAL HOUSING

Heavy cast low copper aluminum (A356 alloy; <0.2% copper) assembly with integral cooling fins. The Optical Panel mounting surface is milled flat (surface variance $\pm .002''$) to facilitate thermal transfer of heat to housing and cooling fins. Solid barrier wall separates optical and electrical compartments. The optical and electrical compartments are integrated to create one assembly. Minimum wall thickness is .188".

ELECTRICAL HOUSING w/ INTEGRATED ARM

Heavy cast low copper aluminum (A356 alloy; <0.2% copper) assembly with integral cooling ribs surrounding the electrical compartment and a flat surface on the top of the arm to accommodate a photocell receptacle. Solid barrier wall separates optical and electrical compartments. The optical compartment and electrical compartment with the integrated support arm combine to create one assembly. Minimum wall thickness is .188". Cast and hinged driver assembly cover is integrated with wiring compartment cover.

PLED*OPTICS

Emitters (LED's) are arrayed on a metal core PCB panel with each emitter located on a copper thermal transfer pad and enclosed by an LED refractor. LED optics completely seal each individual emitter to meet an IP66 rating. In asymmetric distributions, a micro-reflector inside the refractor re-directs the house side emitter output towards the street side and functions as a house side shielding element. Refractors are injection molded H12 acrylic. Each LED refractor is sealed to the PCB over an emitter and all refractors are retained by an aluminum frame. Any one Panel, or group of Panels in a luminaire, have the same optical pattern. LED refractors produce standard site/area distributions. Panels are field replaceable and field rotatable in 90° increments.

LED DRIVER(S)

Constant current electronic with a power factor of >.90 and a minimum operating temperature of -40°F/-40°C. Driver(s) is/are UL and cUL recognized and mounted directly against the Electrical Housing to facilitate thermal transfer, held down by universal clamps to facilitate easy removal. In-line terminal blocks facilitate wiring between the driver and optical arrays. Drivers accept an input of 120-277V, 50/60Hz or 347V-480V, 50, 60Hz. (0 - 10V dimmable driver is standard. Driver has a minimum of 3KV internal surge protection. Luminaire supplied with 20KV surge protector for field accessible installation.)

LED EMITTERS

High output LED's are utilized with drive currents ranging from 350mA to 1050mA. 70CRI Minimum. LED's are available in standard Neutral White (4000K), or optional Cool White (5000K) or Warm White (3000K). Consult Factory for other LED options.

AMBER LED's

PCA (Phosphor Converted Amber) LED's utilize phosphors to create color output similar to LPS lamps and have a slight output in the blue spectral bandwidth. **TRA** (True Amber) LED's utilize material that emits light in the amber spectral bandwidth only without the use of phosphors.

FINISH

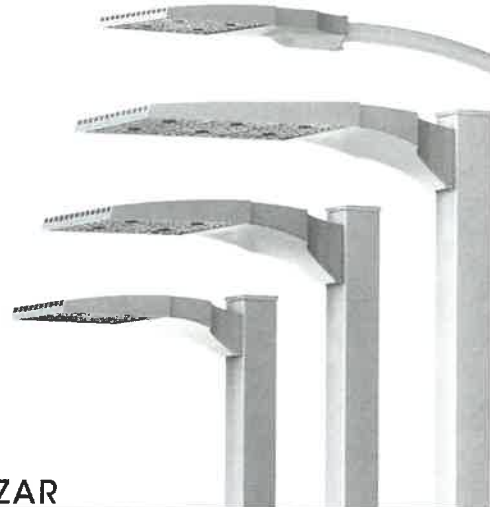
Electrostatically applied TGIC Polyester Powder Coat on substrate prepared with 20 PSI power wash at 140°F. Four step media blast and iron phosphate pretreatment for protection and paint adhesion. 400°F bake for maximum hardness and durability.

MAST ARM FITTER/ELECTRICAL HOUSING

Replaces standard Electrical Housing. Fits standard 2 3/8" O.D. horizontal tenon. Two (2) straps with two (2) bolts each encircle the lower half of the tenon. Upper half of the tenon rests on self-centering steps that position the angle of the luminaire at 0°, +1.5°, +1.5 or +3° up from the horizontal. All hardware is stainless steel.

PROJECT NAME: _____

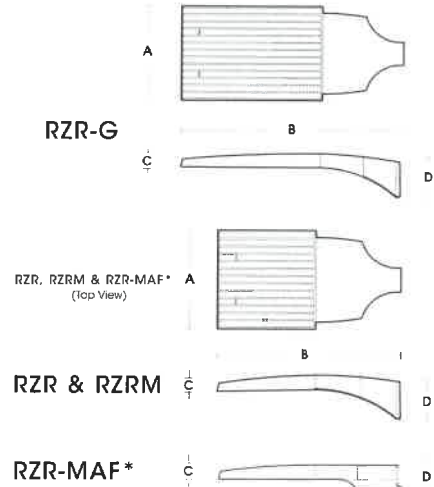
PROJECT TYPE: _____



RAZAR

(MODELS: RZRM, RZR, RZR-G & RZR-MAF*)

PATENT PENDING



FIXTURE	A	B	C	D
RZR-G	15" 381mm	36.5" 927mm	3" 76mm	7" 187mm
RZR	14.75" 375mm	28.25" 718mm	2.75" 70mm	6.5" 165mm
RZRM	11.5" 292mm	22" 559mm	2.5" 64mm	5.25" 133mm
RZR-MAF	15" 381mm	28.25" 724mm	2.5" 64mm	4" 102mm

*DLC PENDING AS OF 7/17



U.S. Architectural Lighting

660 West Avenue O, Palmidale, CA 93551
Phone (661) 233-2000 Fax (661) 233-2011
www.usalighting.com



YOUNGBLOOD STUDIO



RACHEL BRIGGS
ILLUSTRATION-DESIGN

WISEACRE BREWING COMPANY

MEMPHIS, TENNESSEE

JANUARY 2020



Corner Acorn Features (15' dia.)"



ADDITIONAL WISEACRE SIGNAGE

15' CORNER ACORN FEATURES

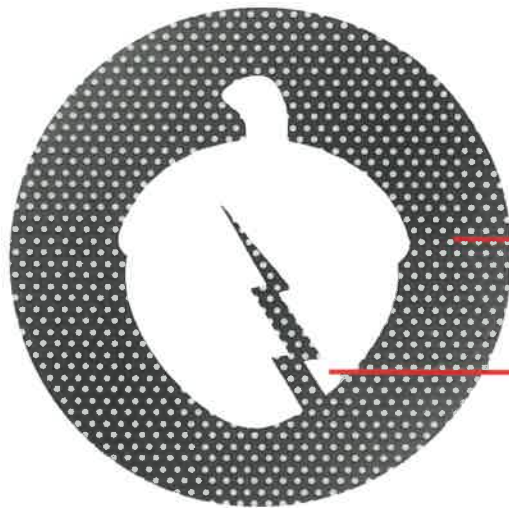
**LOCATION:
CORNER MAIN ENTRY**

The acorn with lightning bolt is a symbol within the logo of the company and part of the Wiseacre brand. Without using our full logo, we wanted to incorporate this symbol on both sides of the main entrance panels to interact with the building and art installed. This is a description of the circular shapes containing an acorn graphic silhouette cutout. These "acorn" features are located on the upper corner of the building overlooking the outdoor beer garden space. Each of these shapes is 15' in diameter and will be created using a perforated aluminum sheet material with approximately 40% porosity in its perforations. Each piece will be laser cut and painted to exactly match the graphics in the renderings. The Acorn sheet material is a flat perforated material and will be attached to the corrugated surface of the building via mechanical hardware fasteners.

15' CORNER ACORN FEATURES, CONTINUED

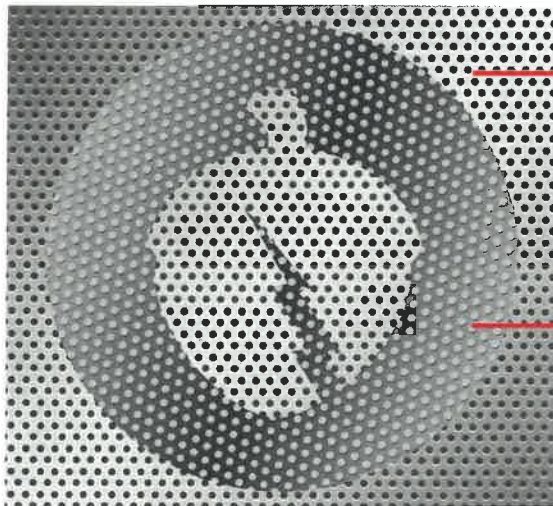
Corner Acorn Features (15' dia.)"

The following images are fabrication / art renderings of the Acorn signage. Each Acorn will be 15' feet, laser cut circles out a perforated aluminum substrate which will be the same material / perforation size as the existing substrate of building. The perforation pattern will differ to give juxtaposition and dimension of the sign when it is affixed to the building. All seams will be bolted to the backing substrate on building.



15' dia aluminum Acorn perforated sign

Cut out Acorn shape



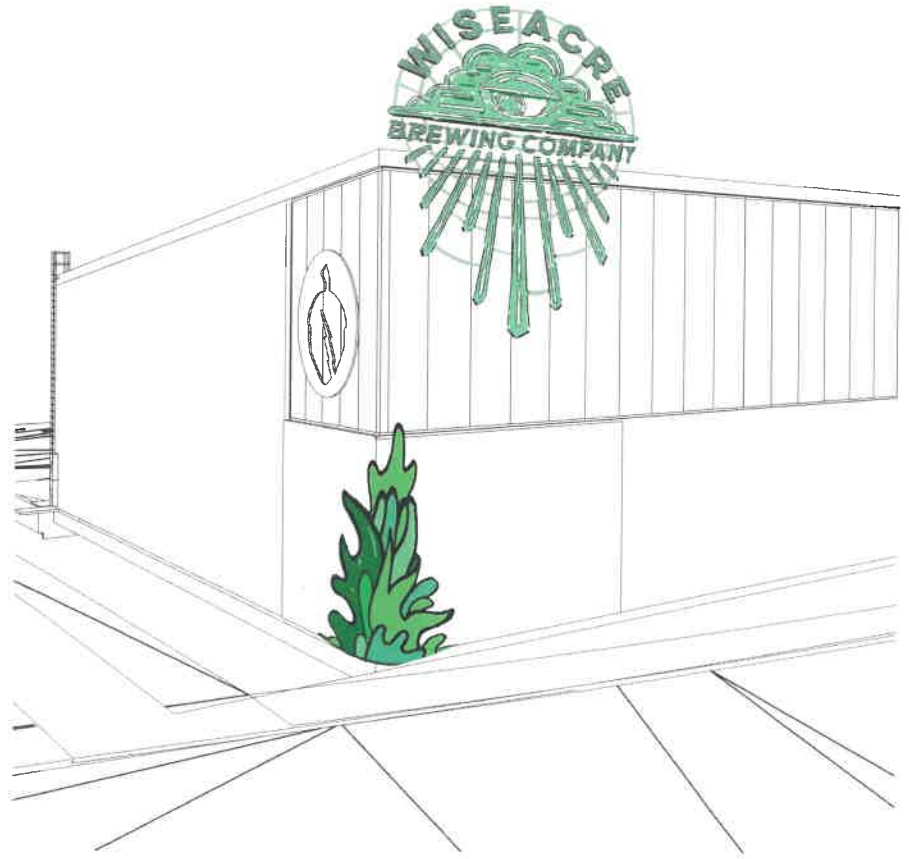
Perforated substrate existing on building

15' dia aluminum Acorn perforated sign

- all seams bolted to perforated substrate on building
- sign will have same perforation as substrate, alt. pattern

ADDITIONAL SIGNAGE AND EXTERIOR LIGHTING

“EYE IN THE SKY” LIGHTED SCULPTURE



Description via Youngblood Studio:

This is a description of the “Eye in the Sky” lighted sculpture piece to be located on the exterior of the new Wisecre facility. The structural portions of this piece will be built from structural steel materials in strict accordance with the certified drawings and designs supplied to Youngblood Studio by the structural engineering firm A2H. The front portions of the Eye in the Sky consisting of the Cloud, the Eye, the descending Rays and all text will be constructed from stainless sheet material that will be formed and fabricated into the final shapes shown in the renderings of this piece. All stainless fabricated forms will be caulked, painted and sealed to ensure a long maintenance free outdoor life.

Designer Rachel Briggs of this piece had a vision for this piece of a mid-century vintage neon sign. We have worked with a lighting engineer to achieve this effect with the most modern and efficient components available. The lighting system we have put together for this project is a technology called “Pixel Tape” This is a high efficiency LED strip light system that in color changing, dimmable and programmable. We have chosen to use a high density LED strip product that contains 120 LED per meter. This strip material has individual micro-controllers every 1.5 inches. These distributed micro-controllers allow us to program changes in color, luminosity, timing, etc...at 1.5 inch increments.



YOUNGBLOOD STUDIO



RACHEL
BRIGGS
ILLUSTRATION DESIGN

WISEACRE BREWING COMPANY

MEMPHIS, TENNESSEE

JANUARY 2020



Having this level of control over all aspects of the lighting output will help ensure that we will be able to fine tune this piece to achieve exactly the effect the Artist has in mind. All light strip material and hardware is designed for permanent outdoor installation and operation. For the front face of this light strip system we have developed a silicon diffuser lens system that delivers a look that is virtually identical to the look of the vintage neon tube fixtures. All programming for this piece will be done from a primary control unit located inside the brewing facility itself. Lighting programs can easily be added or adjusted at any time.

It would be very easy, for instance, to create a 4th of July light scheme that would just be shown only on that day. Once alternate lighting programs were created it would literally be as simple as pushing a button to change from one to the next. The control unit we use for projects such as this have a control timer in them that allows us to enter the map coordinates for the site and we can tell the lights to turn on at dusk and turn off 6 hours later for example and the onboard computer makes the necessary adjustments to account for the change in seasonal change dusk and dawn.



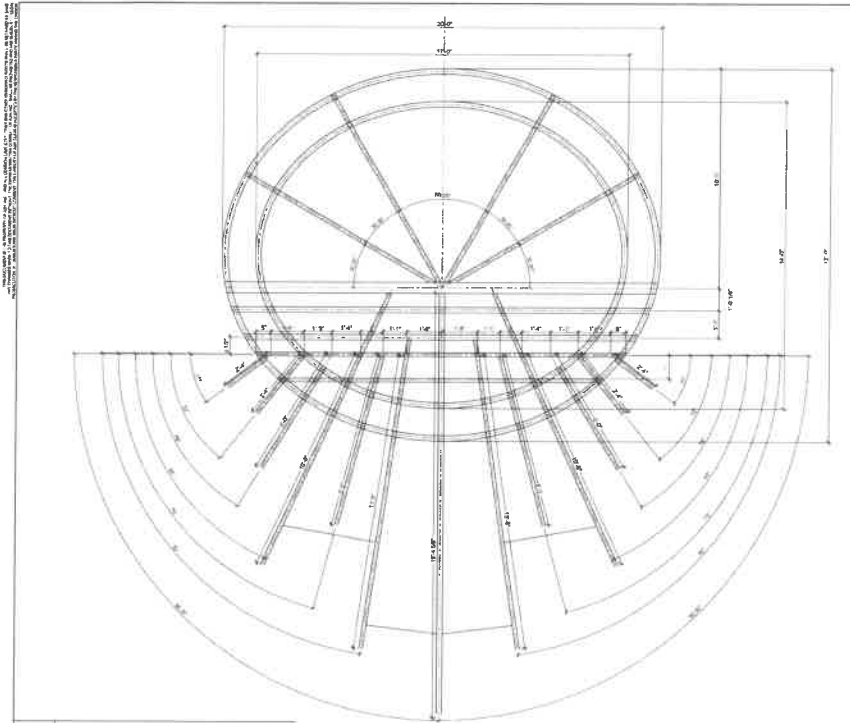
YOUNGBLOOD STUDIO



WISEACRE BREWING COMPANY

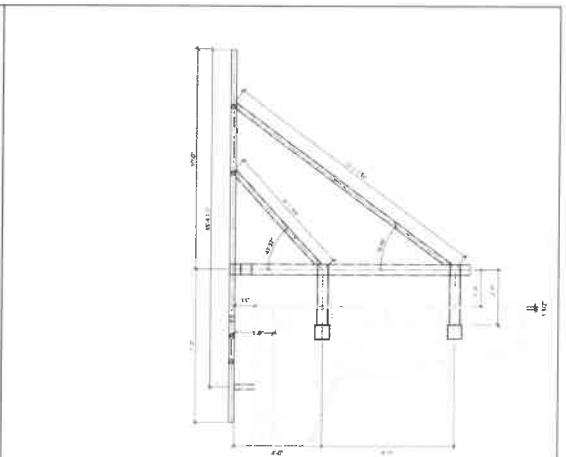
MEMPHIS, TENNESSEE

JANUARY 2020

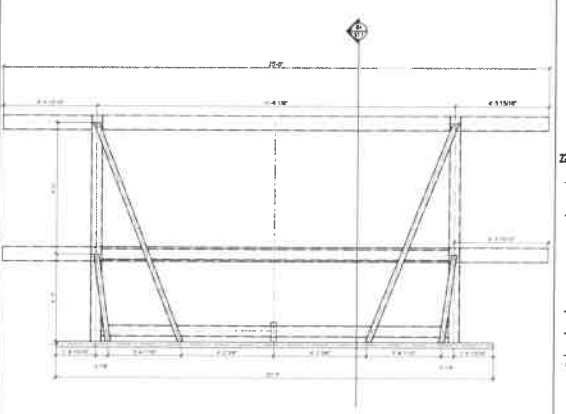


C1 SIGN FRAME

D1 T.B.D



B4 SIGN FRAME SUPPORT SECTION



D4 SIGN FRAME SUPPORT PLAN

A2H ENGINEERS ARCHITECTS PLANNERS

FOR THE
MEMPHIS BREWERY
PROJECT TO BE
LOCATED AT
2240 TRUITT STREET
MEMPHIS, TN

OWNER REVIEW

YOUNGBLOOD STUDIO

WISEACRE
BREWERY
SIGN

2240 TRUITT STREET MEMPHIS,
TN 38114

PROJECT STATUS

REVISED

PROJECT NO.	DATE
1901	NOVEMBER 16, 2019
ISSUE NO.	ISSUED BY
01	AS

WISEACRE FRAME DETAILS

S1.1

"EYE IN THE SKY" LIGHTED SCULPTURE

STRUCTURAL SUPPORT FRAME DIAGRAM



YOUNGBLOOD STUDIO



**RACHEL
BRIGGS**
ILLUSTRATION-DESIGN

WISEACRE BREWING COMPANY
MEMPHIS, TENNESSEE
JANUARY 2020

**"EYE IN THE SKY"
LIGHTED SCULPTURE**

**ADDITIONAL
YOUNGBLOOD STUDIO
(FABRICATOR)
RENDERINGS**



YOUNGBLOOD STUDIO



**RACHEL
BRIGGS**
ILLUSTRATION-DESIGN

WISEACRE BREWING COMPANY

MEMPHIS, TENNESSEE

JANUARY 2020