



DESIGN REVIEW BOARD APPLICATION

**Administered by:
Design Review Board**

Property Address*: 425-427 Madison Avenue, Memphis, TN 38103

Applicant Name & Mailing Address: Preserver Partners, LLC 8700 Trail Lake Dr. W. 105, Memphis, TN 38125

Applicant Phone Number: 901-755-4737 Applicant Fax Number: 901-755-3285

Property Owner's Name & Mailing Address: Preserver Partners, LLC 8700 Trail Lake Dr. W. 105, Memphis, TN 38125

Property Owner's Phone Number: 901-755-4737

The proposed work consists of the following (check all that apply):

Sign Renovation
New Building Other Exterior Alteration

Project Description:

Preserver Partners plans to make improvements to the exterior as well as renovate the entire structure located at 425-427 Madison Avenue. The renovations will be in line with ongoing surrounding developments such as the Wonder Bread Redevelopment, proposed Ravine Park and Union Row. Exterior improvements consist of: 1. adding new lighting, fixtures, electrical, carpentry, signage, and paint, 2. installation of new doors and windows, 3. repairing masonry, structural facade/cornice, and sidewalk and 4. adding public art (mural) to the west facade.

Status of Project:

Architectural renderings and work is complete. Preserver is in the process of issuing a request for bids for General Contractor and sub-contractors.

A complete application must be submitted to the Development Department no later than two weeks before a regularly scheduled meeting of the Design Review Board. Please contact Ellery Ammons at (901)575-0564 or ammons@downtownmemphis.com.

Owner/Applicant Signature: _____

Date: _____

4/17/2019

*Applications for properties that are located within a Landmarks Historic District may require additional approval from the Landmarks Commission. Please contact the Shelby County Division of Planning & Development at (901) 576-6601 for more information.



SELF+TUCKER
ARCHITECTS



RESERVER PARTNERS

ART

428

ST



SELF-TUCKER ARCHITECTS

Architecture Planning Interior Design
 427 Madison Ave., Suite 201
 Memphis, Tennessee 38102
 Telephone: 901.251.1505
 Fax: 901.251.1506
 info@selftucker.com
 www.selftucker.com

SCALE

INTERIM REVIEW ONLY

This document is a conceptual and preliminary design and is not intended for regulatory and permit or construction purposes.
 Author: Jim R. Sear
 Date: 11/14/2018
 Date: 17 April 2019

CONSULTANT

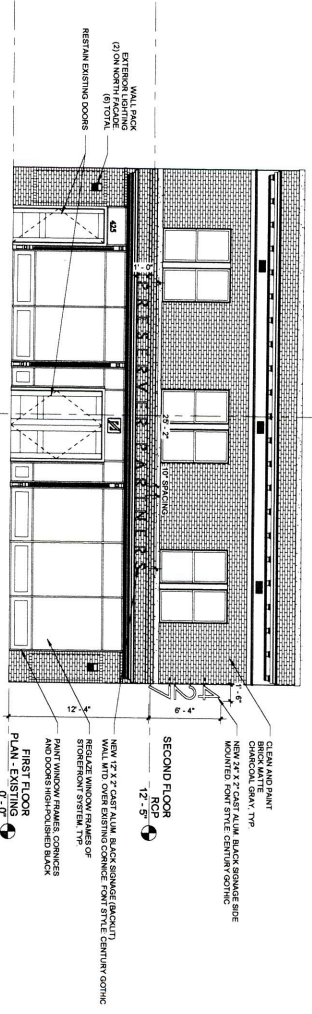
PROJECT CLIENT
427 MADISON REDEVELOPMENT

427 MADISON AVE
 MEMPHIS, TN 38103

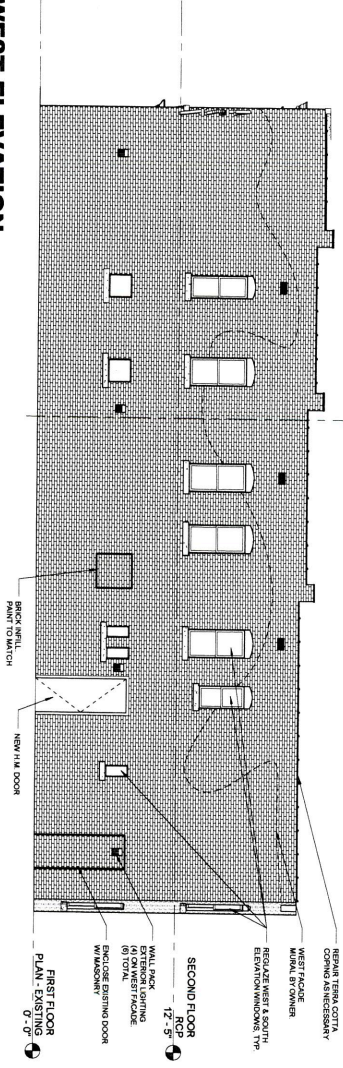
Copyright 2019 Self-Tucker Architects, Inc.
 All rights reserved. No part of this document may be reproduced, stored in a retrieval system, or transmitted in any form or by any means, electronic, mechanical, photocopying, recording, or by any information storage and retrieval system, without the prior written permission of Self-Tucker Architects, Inc.
ISSUES AND REVISIONS

PROJECT NUMBER: 2011
 FILE NAME: CONSTRUCTION DOGS
 DRAWN BY: CCM
 CHECKED BY: JMS
 APPROVED BY: JMS
 SHEET NAME: EXTERIOR ELEVATIONS

SHEET NUMBER
A-301



1B NORTH ELEVATION
 3/16" = 1'-0"



1A WEST ELEVATION
 3/16" = 1'-0"

1 2 3 4 5

A B C D



SELF+TUCKER ARCHITECTS

Architectural Planning Interior Design
 1000 South Main Street
 Memphis, Tennessee 38105
 Phone: 901.251.1500
 Fax: 901.251.1505
 info@selftucker.com
 www.selftucker.com

INTERIM REVIEW ONLY
 These drawings are acceptable, and are not intended for regulatory approval, until they have been reviewed and approved by the consultant.
 Architect: Jan N. Sisk
 Title: Principal
 Date: 17 April 2019

CONSULTANT

PROJECT CLIENT
427 MADISON REDEVELOPMENT

427 MADISON AVE
 MEMPHIS, TN 38103

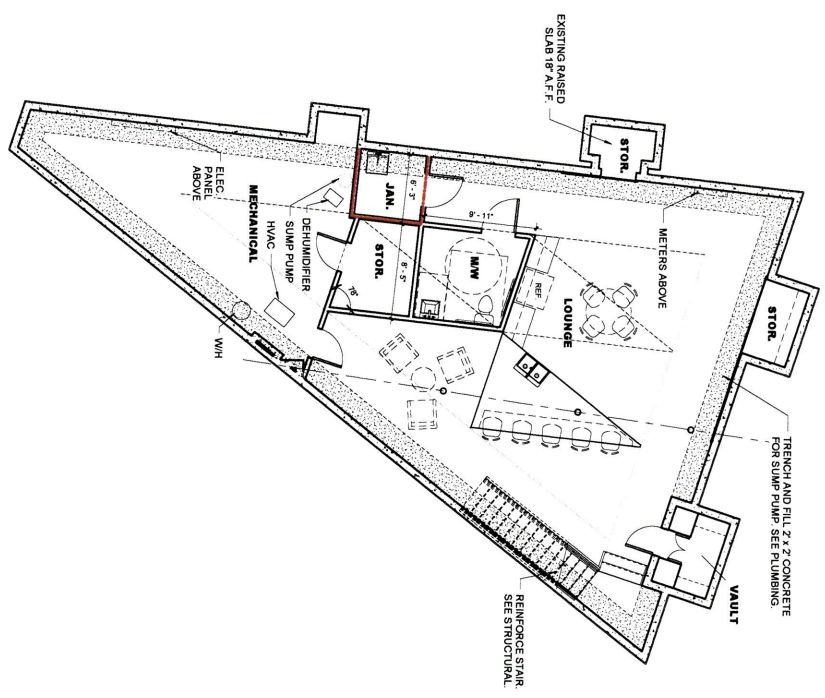
Copyright 2019 Self+Tucker Architects, Inc.
 All rights reserved. No part of these drawings may be reproduced or transmitted in any form or by any means, electronic or mechanical, including photocopying, recording, or by any information storage and retrieval system, without the prior written permission of Self+Tucker Architects, Inc.

ISSUES AND REVISIONS

NO.	DESCRIPTION	DATE

PROJECT NUMBER: 1011
 FILE NAME: CONSTRUCTION DOCS
 DRAWN BY: CCM
 CHECKED BY: JMS
 APPROVED BY: JMS
 SHEET NAME:
BASEMENT FLOOR PLAN

SHEET NUMBER
A-100



1A BASEMENT FLOOR PLAN
 3/16" = 1'-0"

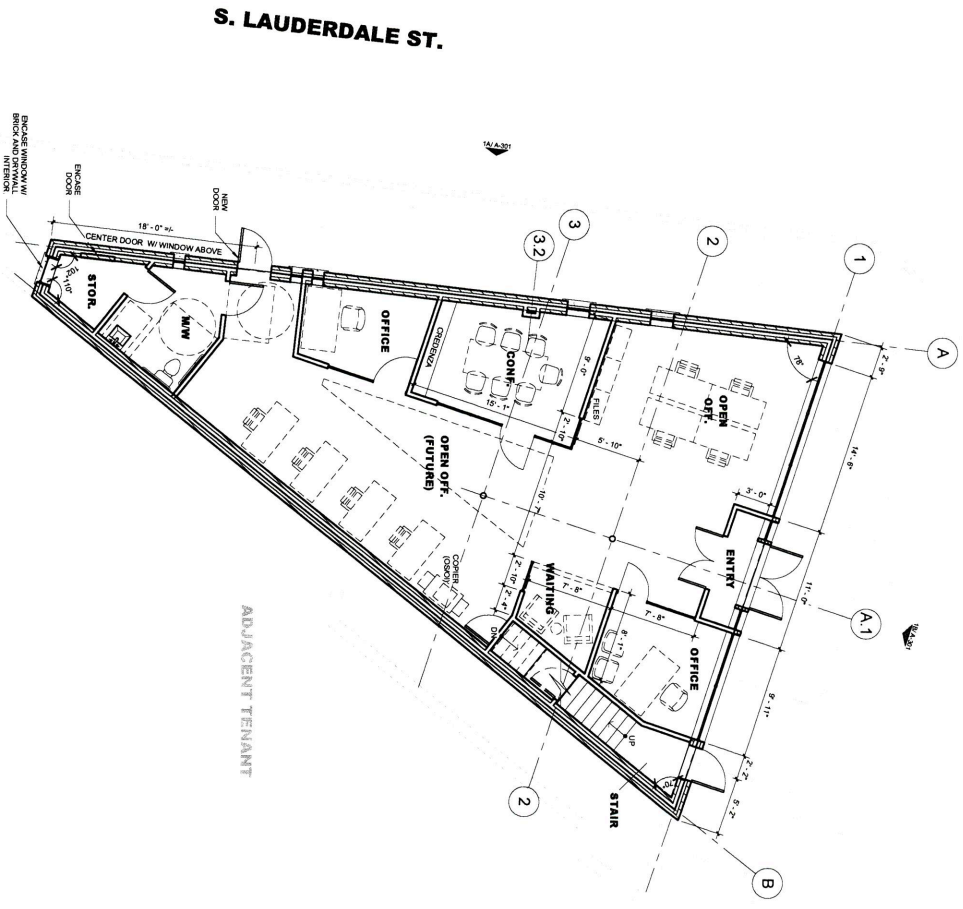
1 2 3 4 5

A B C D

1A FIRST FLOOR PLAN
3/16" = 1'-0"

1 2 3 4 5

A B C D



S. LAUDERDALE ST.

ADJACENT TENANT

A-101

SHEET NUMBER

FIRST FLOOR PLAN

PROJECT NUMBER 1911
 FILE NAME
 DATE
 CHECKED BY MW
 APPROVED BY JMS

CONSTRUCTION DOCS
 ISSUES AND REVISIONS

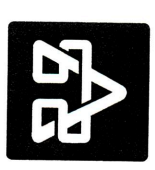
427 MADISON AVE
 MEMPHIS, TN 38103

PROSPECTOR
 427 MADISON
 REDEVELOPMENT

CONSULTANT

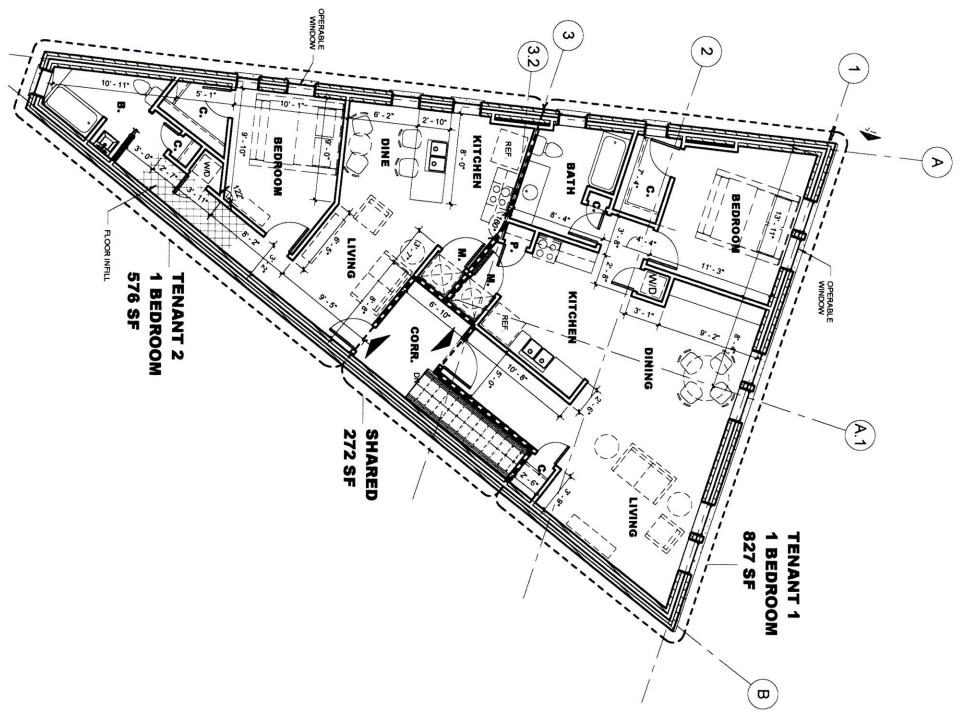
INTERIM REVIEW ONLY
 This document is incomplete and
 not released for permit review only and
 permit or construction purposes
 Architect: Jason R. Self
 Project No. 1911-0114
 Date: 17 April 2019

SELF+TUCKER ARCHITECTS
 Architecture Planning Interior Design
 4600 O.R. M.L.K., JR. AVE. SUITE 207
 MEMPHIS, TN 38117
 Telephone: 901.261.1505
 Fax: 901.261.1505
 www.selftucker.com



1A SECOND FLOOR PLAN
3/16" = 1'-0"

1 2 3 4 5



SELF+TUCKER ARCHITECTS
Architectural Planning Group, Inc.
1000 South Main Street
Memphis, Tennessee 38105
Phone: 901.521.1905
Fax: 901.521.1905
info@selftucker.com
www.selftucker.com

INTERIM REVIEW ONLY
These drawings are for review only and are not intended for regulatory approval. They are not to be used for construction purposes.
Architect: JAMES R. GIBB
Title: ARCHITECT
Date: 17 April, 2019

CONSULTANT

PROJECT/CLIENT
**427 MADISON
REDEVELOPMENT**

427 MADISON AVE.
MEMPHIS, TN 38103

Copyright 2019 Self+Tucker Architects, Inc.
Changing, adapting, copying and/or reuse
in part without the prior written permission of
Self+Tucker Architects, Inc.
ISSUES AND REVISIONS

NO.	DATE	DESCRIPTION

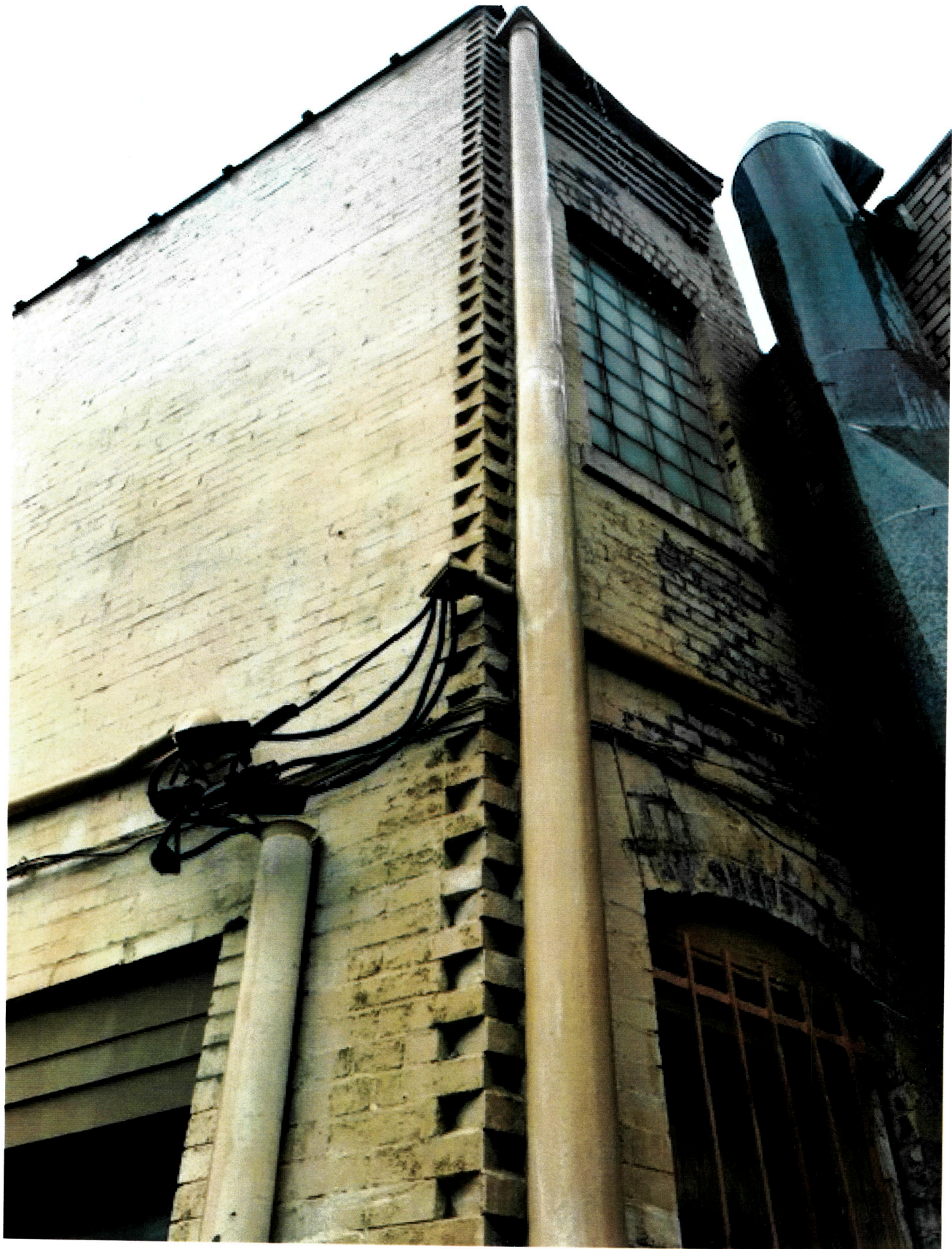
PROJECT NUMBER: 101
FILE NAME: CONSTRUCTION DOCS
DRAWN BY: CCM
CHECKED BY: MW
APPROVED BY: JRS
SHEET NAME:
**SECOND FLOOR
PLAN**

SHEET NUMBER:
A-102

Current Exterior Conditions







Wall Packs

6 total wall packs: 2 front façade and 4 on west facade

DESCRIPTION

The patented Lumark Crosstour™ LED Wall Pack Series of luminaires provides an architectural style with super bright, energy efficient LEDs. The low-profile, rugged die-cast aluminum construction, universal back box, stainless steel hardware along with a sealed and gasketed optical compartment make the Crosstour impervious to contaminants. The Crosstour wall luminaire is ideal for wall/surface, inverted mount for façade/canopy illumination, post/bollard, site lighting, floodlight and low level pathway illumination including stairs. Typical applications include building entrances, multi-use facilities, apartment buildings, institutions, schools, stairways and loading docks test.

SPECIFICATION FEATURES

Construction

Slim, low-profile LED design with rugged one-piece, die-cast aluminum hinged removable door and back box. Matching housing styles incorporate both a small and medium design. The small housing is available in 12W, 18W and 26W. The medium housing is available in the 38W model. Patented secure lock hinge feature allows for safe and easy tool-less electrical connections with the supplied push-in connectors. Back box includes three half-inch, NPT threaded conduit entry points. The universal back box supports both the small and medium forms and mounts to standard 3-1/2" to 4" round and octagonal, 4" square, single gang and masonry junction boxes. Key hole gasket allows for adaptation to junction box or wall. External fin design extracts heat from the fixture surface. One-piece silicone gasket seals door and back box. Minimum 5" wide pole for site lighting application. Not recommended for car wash applications.

Optical

Silicone sealed optical LED chamber incorporates a custom engineered mirrored anodized reflector providing high-efficiency illumination. Optical assembly includes impact-resistant tempered glass and meets IESNA requirements for full cutoff compliance. Available in seven lumen packages; 5000K, 4000K and 3000K CCT.

Electrical

LED driver is mounted to the die-cast housing for optimal heat sinking. LED thermal management system incorporates both conduction and natural convection to transfer heat rapidly away from the LED source. 12W, 18W, 26W and 38W series operate in -40°C to 40°C [-40°F to 104°F]. High ambient 50°C models available. Crosstour luminaires maintain greater than 89% of initial light output after 72,000 hours of operation. Three half-inch NPT threaded conduit entry points allow for thru-branch wiring. Back box is an authorized

Catalog #		Type
Project		
Comments		Date
Prepared by		

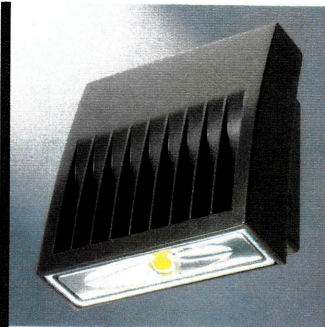
electrical wiring compartment. Integral LED electronic driver incorporates surge protection. 120-277V 50/60Hz or 347V 60Hz models.

Finish

Crosstour is protected with a Super durable TGIC carbon bronze or summit white polyester powder coat paint. Super durable TGIC powder coat paint finishes withstand extreme climate conditions while providing optimal color and gloss retention of the installed life.

Warranty

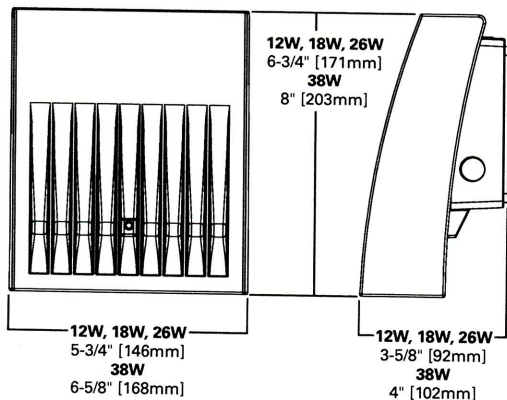
Five-year warranty.



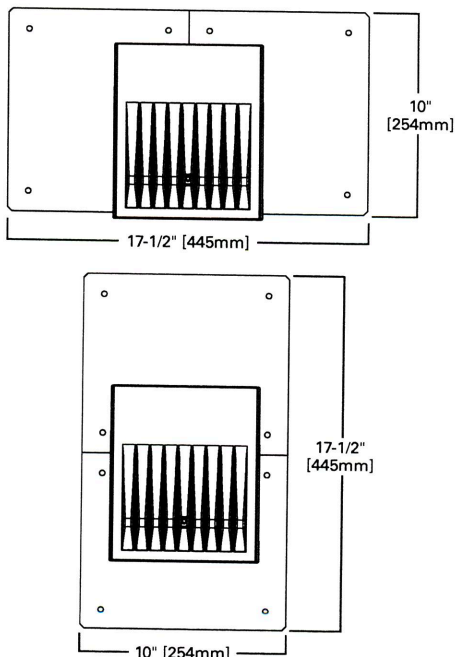
XTOR CROSSTOUR LED

APPLICATIONS:
WALL / SURFACE
POST / BOLLARD
LOW LEVEL
FLOODLIGHT
INVERTED
SITE LIGHTING

DIMENSIONS



ESCUTCHEON PLATES



CERTIFICATION DATA

UL/cUL Wet Location Listed
LM79 / LM80 Compliant
ROHS Compliant
ADA Compliant
NOM Compliant Models
IP66 Ingressed Protection Rated
Title 24 Compliant
DesignLights Consortium® Qualified*

TECHNICAL DATA

40°C Maximum Ambient Temperature
External Supply Wiring 90°C Minimum

EPA

Effective Projected Area (Sq. Ft.):
XTOR1B, XTOR2B, XTOR3B=0.34
XTOR4B=0.45

SHIPPING DATA:

Approximate Net Weight:
3.7 – 5.25 lbs. [1.7 – 2.4 kgs.]

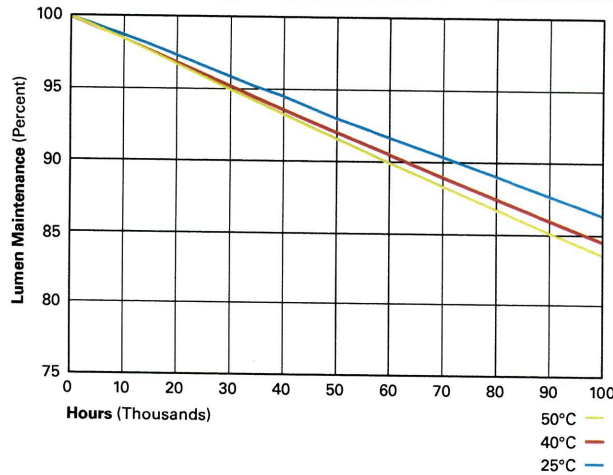
POWER AND LUMENS BY FIXTURE MODEL

LED Information	XTOR1B	XTOR1B-W	XTOR1B-Y	XTOR2B	XTOR2B-W	XTOR2B-Y	XTOR3B	XTOR3B-W	XTOR3B-Y	XTOR4B	XTOR4B-W	XTOR4B-Y
Delivered Lumens (Wall Mount)	1,418	1,396	1,327	2,135	2,103	1,997	2,751	2,710	2,575	4,269	4,205	3,995
Delivered Lumens (With Flood Accessory Kit) ¹	1,005	990	940	1,495	1,472	1,399	2,099	2,068	1,965	3,168	3,121	2,965
B.U.G. Rating ²	B1-U0-G0	B1-U0-G0	B1-U0-G0	B1-U0-G0	B1-U0-G0	B1-U0-G0	B1-U0-G0	B1-U0-G0	B1-U0-G0	B2-U0-G0	B2-U0-G0	B2-U0-G0
CCT (Kelvin)	5,000	4,000	3,000	5,000	4,000	3,000	5,000	4,000	3,000	5,000	4,000	3,000
CRI (Color Rendering Index)	70	70	70	70	70	70	70	70	70	70	70	70
Power Consumption (Watts)	12W	12W	12W	18W	18W	18W	26W	26W	26W	38W	38W	38W

NOTES: 1 Includes shield and visor. 2 B.U.G. Rating does not apply to floodlighting.

LUMEN MAINTENANCE

Ambient Temperature	TM-21 Lumen Maintenance (72,000 Hours)	Theoretical L70 (Hours)
XTOR1B Model		
25°C	> 90%	255,000
40°C	> 89%	234,000
50°C	> 88%	215,000
XTOR2B Model		
25°C	> 89%	240,000
40°C	> 88%	212,000
50°C	> 87%	196,000
XTOR3B Model		
25°C	> 89%	240,000
40°C	> 88%	212,000
50°C	> 87%	196,000
XTOR4B Model		
25°C	> 89%	222,000
40°C	> 87%	198,000
50°C	> 87%	184,000



CURRENT DRAW

Voltage	Model Series			
	XTOR1B	XTOR2B	XTOR3B	XTOR4B
120V	0.103A	0.15A	0.22A	0.34A
208V	0.060A	0.09A	0.13A	0.17A
240V	0.053A	0.08A	0.11A	0.17A
277V	0.048A	0.07A	0.10A	0.15A
347V	0.039A	0.06A	0.082A	0.12A

ORDERING INFORMATION

Sample Number: XTOR2B-W-WT-PC1

Series ¹	LED Kelvin Color	Housing Color	Options (Add as Suffix)	Accessories (Order Separately)
XTOR1B =Small Door, 12W XTOR2B =Small Door, 18W XTOR3B =Small Door, 26W XTOR4B =Medium Door, 38W	[Blank] =Bright White (Standard), 5000K W =Neutral White, 4000K Y =Warm White, 3000K	[Blank] =Carbon Bronze (Standard) WT =Summit White BK =Black BZ =Bronze AP =Grey GM =Graphite Metallic DP =Dark Platinum	PC1 =Photocontrol 120V ² PC2 =Photocontrol 208-277V ^{2,3} 347V =347V ⁴ HA =50°C High Ambient ⁴	WG/XTOR =Wire Guard ⁵ XTORFLD-KNC =Knuckle Floodlight Kit ⁶ XTORFLD-TRN =Trunnion Floodlight Kit ⁶ XTORFLD-KNC-WT =Knuckle Floodlight Kit, Summit White ⁶ XTORFLD-TRN-WT =Trunnion Floodlight Kit, Summit White ⁶ EWP/XTOR =Escutcheon Wall Plate, Carbon Bronze EWP/XTOR-WT =Escutcheon Wall Plate, Summit White

NOTES:

- DesignLights Consortium® Qualified and classified for both DLC Standard and DLC Premium, refer to www.designlights.org for details.
- Photocontrols are factory installed.
- Order PC2 for 347V models.
- Thru-branch wiring not available with HA option or with 347V. XTOR3B not available with HA and 347V or 120V combination.
- Wire guard for wall/surface mount. Not for use with floodlight kit accessory.
- Floodlight kit accessory supplied with knuckle (KNC) or trunnion (TRN) base, small and large top visors and small and large impact shields.

STOCK ORDERING INFORMATION

12W Series	18W Series	26W Series	38W Series
XTOR1B =12W, 5000K, Carbon Bronze	XTOR2B =18W, 5000K, Carbon Bronze	XTOR3B =26W, 5000K, Carbon Bronze	XTOR4B =38W, 5000K, Carbon Bronze
XTOR1B-WT =12W, 5000K, Summit White	XTOR2B-W =18W, 4000K, Carbon Bronze	XTOR3B-W =26W, 4000K, Carbon Bronze	XTOR4B-W =38W, 4000K, Carbon Bronze
XTOR1B-PC1 =12W, 5000K, 120V PC, Carbon Bronze	XTOR2B-WT =18W, 5000K, Summit White	XTOR3B-WT =26W, 5000K, Summit White	XTOR4B-WT =38W, 5000K, Summit White
XTOR1B-W =12W, 4000K, Carbon Bronze	XTOR2B-PC1 =18W, 5000K, 120V PC, Carbon Bronze	XTOR3B-PC1 =26W, 5000K, 120V PC, Carbon Bronze	XTOR4B-PC1 =38W, 5000K, 120V PC, Carbon Bronze
	XTOR2B-W-PC1 =18W, 4000K, 120V PC, Carbon Bronze	XTOR3B-W-PC1 =26W, 4000K, 120V PC, Carbon Bronze	XTOR4B-W-PC1 =38W, 4000K, 120V PC, Carbon Bronze
	XTOR2B-347V =18W, 5000K, Carbon Bronze, 347V	XTOR3B-347V =26W, 5000K, Carbon Bronze, 347V	XTOR4B-347V =38W, 5000K, Carbon Bronze, 347V
	XTOR2B-WT-PC1 =18W, 5000K, 120V PC, Summit White	XTOR3B-PC2 =26W, 5000K, 208-277V PC, Carbon Bronze	

Windows

Arch Head over Single
Double Hung Aluminum Clad Exteriors



HUNG

COMBINATION ASSEMBLIES

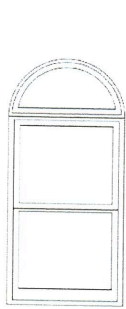
Arch Top Units



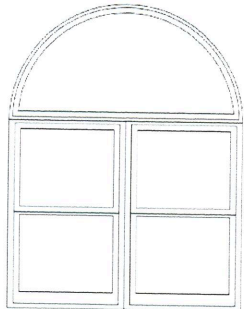
Combinations are a great way to create visual interest in any project. A combination is an assembly formed by two or more separate windows or doors whose frames are mullioned together by a combination or reinforcing mullion.

Pella window combinations are available in an endless variety of arrangements. Below are available factory-assembled combinations. Some units can be fixed or vent depending on availability. Series. Refer to Clad/Wood Overview Section for typical combinations requirements, and limitations related to mulling various combinations.

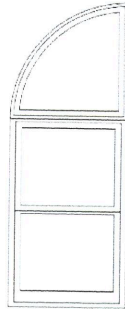
Contact your local Pella sales representative for more information.



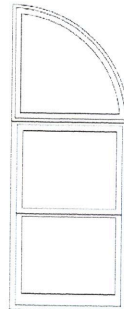
Half Circle over Single



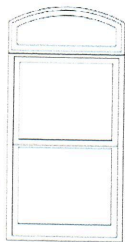
Half Circle over Two-Wide



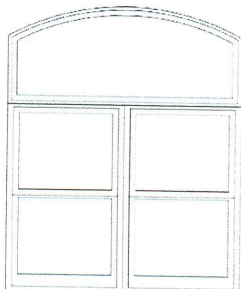
Left Quarter Circle over Single



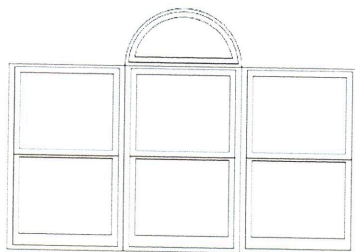
Right Quarter Circle over Single



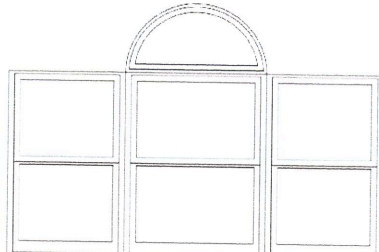
Arch Head over Single



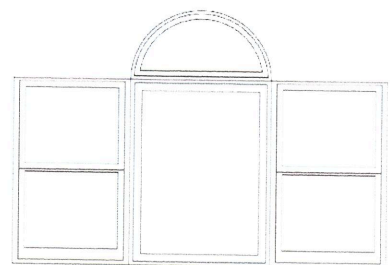
Arch Head over Two-Wide



Half Circle centered on Three-Wide Equal



Half Circle over Three-Wide Unequal



Half Circle over Center Fixed with Flankers

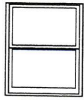
Refer to Clad/Wood Overview Section for standard size range charts.



[Click to view Clad-Wood Combinations Sections](#)

[Combination Recommendations Downloadable PDF.](#)

[Combination Size Tables Downloadable PDF.](#)



HUNG

DESIGN DATA

Wood and Aluminum-Clad Exteriors

Miscellaneous Formulas



Special Size Frame Dimensions*

SASH CONFIGURATION	VENT-EQUAL	COTTAGE	FIXED
SASH GLASS RATIO TOP % : BOTTOM %	50 : 50	40 : 60	NA
SHORTEST UNIT FRAME SIZE	24-3/8" (619)	40-1/4" (1 022)	17" (432)
TALLEST UNIT FRAME SIZE	96" (2 438)	81" (2 057)	71" (1 803)
UNIT FRAME WIDTH RANGE	14" to 48" (356 to 1 219)	14" to 48" (356 to 1 219)	17" to 59" (432 to 1 499)

Opening Dimensions

CLAD EXTERIOR UNITS:

Dimensions shown in standard size tables are rough opening dimensions.

WOOD EXTERIOR UNITS:

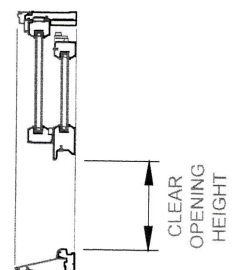
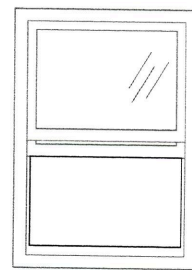
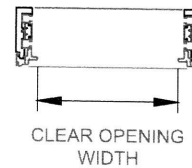
Use frame dimension plus dimensions below. This dimension includes the use of standard 1-1/8" wood subsill.

FRAME	ROUGH		MASONRY	
	Width	Height	Width	Height
Brickmould				
STD	+ 3/4"	+1-7/8"	+ 3-1/8"	+ 3-1/8"
3-1/2"	+ 3/4"	+1-7/8"	+ 6-3/8"	+ 4-3/4"

For clad and wood units with HurricaneShield® impact-resistant glass, see the product installation instructions or refer to local building code requirements.

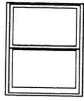
Equal Sash Only

	VENT UNITS	FIXED AND TRANSOM UNITS
VISIBLE GLASS	Width = Frame - 5.647" Height = (Frame - 8.681") ÷ 2	Width = Frame - 5.75" Height = Frame - 5.75"
ACTUAL GLASS	Width = Frame - 4.375" Height = (Frame - 5.983") ÷ 2	Width = Frame - 4.375" Height = Frame - 4.375"
CLEAR OPENING*	COW = Frame Width - 3.4375" COH = (Frame Height ÷ 2) - 4.4375"	
VENT AREA FT²	(COW x COH) ÷ 144	



Traditional grille patterns shown. Refer to Grille Types section for additional patterns and profiles.

* Some units with custom glazing may have limited travel. Integrated Rolscreen® is only available on sizes greater than or equal to 34" tall and 21" wide and less than or equal to 84" tall and 48" wide. See your local Pella sales representative for specific size information.



HUNG

DESIGN DATA

Wood and Aluminum-Clad Exteriors
Double- and Single-Hung



VENT EQUAL SASH UNITS FOR SINGLE- AND DOUBLE-HUNG

Unit	Egress	Clear Opening (Inches)		Vent Area Ft ²	Visible Glass Ft ²	Standard Glass Thickness (mm)		Performance Class & Grade ¹	
		Width (Inches)	Height (Inches)			Annealed	Tempered	Clad	Wood
2135		17-5/16	13-1/16	1.6	2.8	2.5	3	CW50	CW45
2141		17-5/16	16-1/16	1.9	3.4	2.5	3	CW50	CW45
2147		17-5/16	19-1/16	2.3	4.1	2.5	3	CW50	CW45
2153		17-5/16	22-1/16	2.7	4.7	2.5	3	CW50	CW45
2157		17-5/16	24-1/16	2.9	5.2	2.5	3	CW50	CW45
2159		17-5/16	25-1/16	3.0	5.4	2.5	3	CW50	CW45
2165		17-5/16	28-1/16	3.4	6.0	2.5	3	CW50	CW45
2171		17-5/16	31-1/16	3.7	6.6	2.5	3	CW50	CW45
2177		17-5/16	34-1/16	4.1	7.3	2.5	3	CW50	CW45
2184		17-5/16	37-9/16	4.5	8.0	2.5	3	CW40	CW40
2535		21-5/16	13-1/16	1.9	3.5	2.5	3	CW50	CW45
2541		21-5/16	16-1/16	2.4	4.3	2.5	3	CW50	CW45
2547		21-5/16	19-1/16	2.8	5.1	2.5	3	CW50	CW45
2553		21-5/16	22-1/16	3.3	6.0	2.5	3	CW50	CW45
2557		21-5/16	24-1/16	3.6	6.5	2.5	3	CW50	CW45
2559		21-5/16	25-1/16	3.7	6.8	2.5	3	CW50	CW45
2565		21-5/16	28-1/16	4.2	7.6	2.5	3	CW50	CW45
2571		21-5/16	31-1/16	4.6	8.4	2.5	3	CW50	CW45
2577	E ₁	21-5/16	34-1/16	5.0	9.2	2.5	3	CW50	CW45
2584	E ₁	21-5/16	37-9/16	5.6	10.1	2.5	3	CW40	CW40
2935		25-5/16	13-1/16	2.3	4.3	2.5	3	CW50	CW45
2941		25-5/16	16-1/16	2.8	5.2	2.5	3	CW50	CW45
2947		25-5/16	19-1/16	3.4	6.2	2.5	3	CW50	CW45
2953		25-5/16	22-1/16	3.9	7.2	2.5	3	CW50	CW45
2957		25-5/16	24-1/16	4.2	7.8	2.5	3	CW50	CW45
2959		25-5/16	25-1/16	4.4	8.2	2.5	3	CW50	CW45
2965		25-5/16	28-1/16	4.9	9.1	2.5	3	CW50	CW45
2971	E ₁	25-5/16	31-1/16	5.5	10.1	2.5	3	CW50	CW45
2977	E	25-5/16	34-1/16	6.0	11.1	2.5	3	CW50	CW45
2984	E	25-5/16	37-9/16	6.6	12.2	2.5	3	CW40	CW40
3335		29-5/16	13-1/16	2.7	5.0	2.5	3	CW50	CW45
3341		29-5/16	16-1/16	3.3	6.1	2.5	3	CW50	CW45
3347		29-5/16	19-1/16	3.9	7.3	2.5	3	CW50	CW45
3353		29-5/16	22-1/16	4.5	8.4	2.5	3	CW50	CW45
3357		29-5/16	24-1/16	4.9	9.2	2.5	3	CW50	CW45
3359	E ₁	29-5/16	25-1/16	5.1	9.6	2.5	3	CW50	CW45
3365	E	29-5/16	28-1/16	5.7	10.7	2.5	3	CW50	CW45
3371	E	29-5/16	31-1/16	6.3	11.8	2.5	3	CW50	CW45
3377	E	29-5/16	34-1/16	6.9	13.0	2.5	3	CW50	CW45
3384	E	29-5/16	37-9/16	7.7	14.3	2.5	3	CW40	CW40

Continued on next page

Egress Notes:

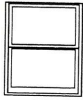
Check all applicable local codes for emergency egress requirements.

E = Window meets minimum clear opening of 24" height, 20" width, and 5.7 ft².

E₁ = Window meets minimum clear opening of 24" height, 20" width, and 5.0 ft².

(1) Maximum design pressure when glazed with appropriate glass thickness.

To convert area to square meters (m²), multiply square feet by 0.0929.



HUNG

DESIGN DATA

Wood and Aluminum-Clad Exteriors
Double- and Single-Hung



VENT EQUAL SASH UNITS FOR SINGLE- AND DOUBLE-HUNG

Unit	Egress	Clear Opening (Inches)		Vent Area Ft ²	Visible Glass Ft ²	Standard Glass Thickness (mm)		Performance Class & Grade ¹	
		Width (Inches)	Height (Inches)			Annealed	Tempered	Clad	Wood
3735		33-5/16	13-1/16	3.0	5.7	2.5	3	CW50	CW45
3741		33-5/16	16-1/16	3.7	7.0	2.5	3	CW50	CW45
3747		33-5/16	19-1/16	4.4	8.3	2.5	3	CW50	CW45
3753		33-5/16	22-1/16	5.1	9.6	2.5	3	CW50	CW45
3757	E ₁	33-5/16	24-1/16	5.6	10.5	2.5	3	CW50	CW45
3759	E	33-5/16	25-1/16	5.8	11.0	2.5	3	CW50	CW45
3765	E	33-5/16	28-1/16	6.5	12.3	2.5	3	CW50	CW45
3771	E	33-5/16	31-1/16	7.2	13.6	2.5	3	CW50	CW45
3777	E	33-5/16	34-1/16	7.9	14.9	2.5	3	CW50	CW45
3784	E	33-5/16	37-9/16	8.7	16.4	2.5	3	CW40	CW40
4135		37-5/16	13-1/16	3.4	6.5	2.5	3	CW50	CW45
4141		37-5/16	16-1/16	4.2	7.9	2.5	3	CW50	CW45
4147		37-5/16	19-1/16	4.9	9.4	2.5	3	CW50	CW45
4153		37-5/16	22-1/16	5.7	10.9	2.5	3	CW50	CW45
4157	E	37-5/16	24-1/16	6.2	11.9	2.5	3	CW50	CW45
4159	E	37-5/16	25-1/16	6.5	12.4	2.5	3	CW50	CW45
4165	E	37-5/16	28-1/16	7.3	13.8	2.5	3	CW50	CW45
4171	E	37-5/16	31-1/16	8.1	15.3	2.5	3	CW50	CW45
4177	E	37-5/16	34-1/16	8.8	16.8	2.5	3	CW45	CW45
4184	E	37-5/16	37-9/16	9.7	18.5	2.5	3	CW40	CW40
4535		41-5/16	13-1/16	3.7	7.2	2.5	3	CW50	CW45
4541		41-5/16	16-1/16	4.6	8.8	2.5	3	CW50	CW45
4547		41-5/16	19-1/16	5.5	10.5	2.5	3	CW50	CW45
4553		41-5/16	22-1/16	6.3	12.1	2.5	3	CW50	CW45
4557	E	41-5/16	24-1/16	6.9	13.2	2.5	3	CW50	CW45
4559	E	41-5/16	25-1/16	7.2	13.7	2.5	3	CW50	CW45
4565	E	41-5/16	28-1/16	8.1	15.4	2.5	3	CW50	CW45
4571	E	41-5/16	31-1/16	8.9	17.0	2.5	3	CW45	CW45
4577	E	41-5/16	34-1/16	9.8	18.7	2.5	3	CW45	CW45
4584	E	41-5/16	37-9/16	10.8	20.6	3	3	CW40	CW40
4835		44-5/16	13-1/16	4.0	7.7	2.5	3	CW50	CW45
4841		44-5/16	16-1/16	4.9	9.5	2.5	3	CW50	CW45
4847		44-5/16	19-1/16	5.9	11.3	2.5	3	CW50	CW45
4853		44-5/16	22-1/16	6.8	13.0	2.5	3	CW50	CW45
4857	E	44-5/16	24-1/16	7.4	14.2	2.5	3	CW50	CW45
4859	E	44-5/16	25-1/16	7.7	14.8	2.5	3	CW50	CW45
4865	E	44-5/16	28-1/16	8.6	16.6	2.5	3	CW45	CW45
4871	E	44-5/16	31-1/16	9.6	18.3	2.5	3	CW45	CW45
4877	E	44-5/16	34-1/16	10.5	20.1	3	3	CW45	CW45
4884	E	44-5/16	37-9/16	11.6	22.2	3	3	CW40	CW40

Egress Notes:

Check all applicable local codes for emergency egress requirements.

E = Window meets minimum clear opening of 24" height, 20" width, and 5.7 ft².

E₁ = Window meets minimum clear opening of 24" height, 20" width, and 5.0 ft².

(1) Maximum performance when glazed with the appropriate glass thickness.

To convert area to square meters (m²), multiply square feet by 0.0929.